

beta III Tubulin monoclonal antibody

Catalog: MB10621

Host: Rabbit

Reactivity: Human, Mouse, Rat

BackGround:

TUBB3 Tubulin is the major constituent of microtubules. It binds two moles of GTP, one at an exchangeable site on the beta chain and one at a non-exchangeable site on the alpha-chain. TUBB3 plays a critical role in proper axon guidance and maintenance.

Product:

50mM Tris-Glycine(pH 7.4), 0.15M NaCl, 40% Glycerol, 0.01% Sodium azide and 0.05% BSA

Molecular Weight:

Calculated MW: 50 kDa; Observed MW: 50 kDa

Swiss-Prot:

Q13509

Purification&Purity:

Affinity Purified

Applications:

WB: 1/500-1/1000 IHC: 1/50-1/100 IF: 1/50-1/200
IP: 1/20

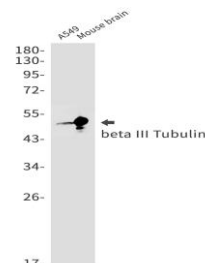
Storage&Stability:

Store at 4 °C short term. Aliquot and store at -20 °C long term. Avoid freeze-thaw cycles.

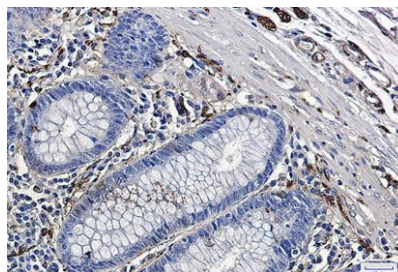
Isotype:

IgG

DATA:



Western blot analysis of beta III Tubulin in A549, mouse brain lysates using beta III Tubulin antibody.



Western blot analysis of beta III Tubulin in rat Brain lysates using beta III Tubulin antibody.

Immunocytochemistry analysis of beta III Tubulin in Hela using beta III Tubulin antibody, and DAPI

Immunohistochemistry analysis of paraffin-embedded Human colon cancer using beta III Tubulin antibody. High-pressure and temperature Sodium Citrate pH 6.0 was used for antigen retrieval.

Note:

For research use only, not for use in diagnostic procedure.

Bioworld Technology, Inc.

Add: 1660 South Highway 100, Suite 500 St. Louis Park, MN 55416, USA.

Email: info@bioworld.com

Tel: 6123263284

Fax: 6122933841

Bioworld technology, co. Ltd.

Add: No 9, weidi road Qixia District Nanjing, 210046, P. R. China.

Email: info@biogot.com

Tel: 0086-025-68037686

Fax: 0086-025-68035151