

## BAT3 monoclonal antibody

Catalog: MB10612

Host: Rabbit

Reactivity: Human, Mouse, Rat

### BackGround:

Chaperone that plays a key role in various processes such as apoptosis, insertion of tail-anchored (TA) membrane proteins to the endoplasmic reticulum membrane and regulation of chromatin. Acts in part by regulating stability of proteins and their degradation by the proteasome. Participates in endoplasmic reticulum stress-induced apoptosis via its interaction with AIFM1/AIF by regulating AIFM1/AIF stability and preventing its degradation.

### Product:

50mM Tris-Glycine (pH 7.4), 0.15M NaCl, 40% Glycerol, 0.01% Sodium azide and 0.05% BSA

### Molecular Weight:

Calculated MW: 119 kDa; Observed MW: 150 kDa

### Swiss-Prot:

P46379

### Purification&Purity:

Affinity Purified

### Applications:

WB: 1/500-1/1000 IF: 1/50-1/200

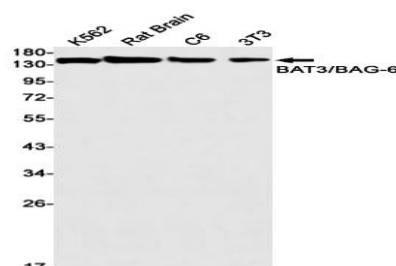
### Storage&Stability:

Store at 4 °C short term. Aliquot and store at -20 °C long term. Avoid freeze-thaw cycles.

### Isotype:

IgG

### DATA:



Western blot analysis of BAT3/BAG6 in K562, rat Brain, C6, 3T3 lysates using BAT3 antibody.

Immunocytochemistry analysis of BAT3/BAG6 in MCF-7 using BAT3/BAG6 antibody, and DAPI

### Note:

For research use only, not for use in diagnostic procedure.

### Bioworld Technology, Inc.

Add: 1660 South Highway 100, Suite 500 St. Louis Park, MN 55416, USA.

Email: [info@bioworld.com](mailto:info@bioworld.com)

Tel: 6123263284

Fax: 6122933841

### Bioworld technology, co. Ltd.

Add: No 9, weidi road Qixia District Nanjing, 210046, P. R. China.

Email: [info@biogol.com](mailto:info@biogol.com)

Tel: 0086-025-68037686

Fax: 0086-025-68035151