

## ATPB monoclonal antibody

Catalog: MB10596

Host: Rabbit

Reactivity: Human, Mouse, Rat, Monkey

### BackGround:

Rotation of the central stalk against the surrounding  $\alpha(3)\beta(3)$  subunits leads to hydrolysis of ATP in three separate catalytic sites on the beta subunits.

### Product:

50mM Tris-Glycine(pH 7.4), 0.15M NaCl, 40% Glycerol, 0.01% Sodium azide and 0.05% BSA

### Molecular Weight:

Calculated MW: 57 kDa; Observed MW: 52 kDa

### Swiss-Prot:

P06576

### Purification&Purity:

Affinity Purified

### Applications:

WB: 1/500-1/1000 IHC: 1/50-1/100 IF: 1/50-1/200  
IP: 1/20

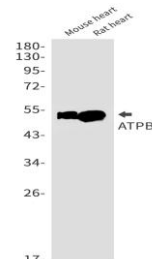
### Storage&Stability:

Store at 4 °C short term. Aliquot and store at -20 °C long term. Avoid freeze-thaw cycles.

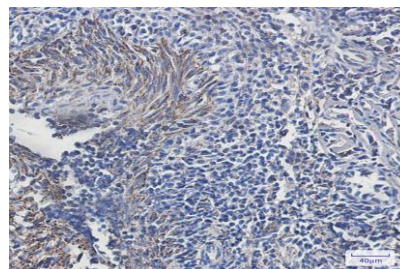
### Isotype:

IgG

### DATA:



Western blot analysis of ATPB in mouse heart, rat heart lysates using ATPB antibody.



Western blot analysis of ATPB in Jurkat, Hela, COS7, Raji lysates using ATPB antibody.

Immunohistochemistry analysis of paraffin-embedded Human tonsil using ATPB antibody. High-pressure and temperature Sodium Citrate pH 6.0 was used for antigen retrieval.

Immunocytochemistry analysis of ATPB in Hela using ATPB antibody, and DAPI.

### Note:

For research use only, not for use in diagnostic procedure.

### Bioworld Technology, Inc.

Add: 1660 South Highway 100, Suite 500 St. Louis Park, MN 55416, USA.

Email: [info@bioworld.com](mailto:info@bioworld.com)

Tel: 6123263284

Fax: 6122933841

### Bioworld technology, co. Ltd.

Add: No 9, weidi road Qixia District Nanjing, 210046, P. R. China.

Email: [info@biogot.com](mailto:info@biogot.com)

Tel: 0086-025-68037686

Fax: 0086-025-68035151