

## Phospho-GSK3 beta (Ser9) monoclonal antibody

Catalog: MB10428

Host: Rabbit

Reactivity: Human, Mouse, Rat

### BackGround:

Glycogen synthase kinase-3 (GSK3) is a proline-directed serine-threonine kinase that was initially identified as a phosphorylating and inactivating glycogen thase .GSK3B is involved in energy metabolism, neuronal cell development, and body pattern formation. In skeletal muscle, it contributes to insulin regulation of glycogen synthesis by phosphorylating and inhibiting GYS1 activity and hence glycogen synthesis.

### Product:

50mM Tris-Glycine(pH 7.4), 0.15M NaCl, 40% Glycerol, 0.01% Sodium azide and 0.05% BSA

### Molecular Weight:

Calculated MW: 47 kDa; Observed MW: 47 kDa

### Swiss-Prot:

P49841

### Purification&Purity:

Affinity Purified

### Applications:

WB: 1/500-1/1000 IHC: 1/50-1/100 IF: 1/50-1/200

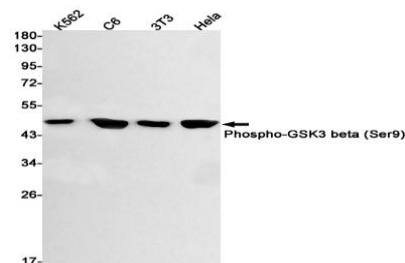
### Storage&Stability:

Store at 4 °C short term. Aliquot and store at -20 °C long term. Avoid freeze-thaw cycles.

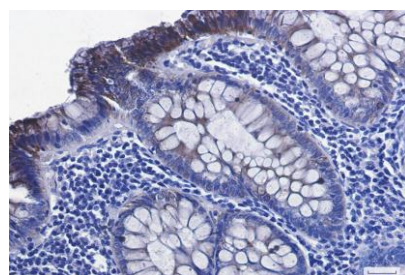
### Isotype:

IgG

### DATA:



Western blot analysis of Phospho-GSK3 beta in K562, C6, 3T3, Hela lysates using Phospho-GSK3 beta antibody.



Immunocytochemistry analysis of Phospho-GSK3 beta in Hela using Phospho-GSK3 beta antibody, and DAPI

Immunohistochemistry analysis of paraffin-embedded Human colon cancer using Phospho-GSK3 beta antibody. High-pressure and temperature Sodium Citrate pH 6.0 was used for antigen retrieval.

### Note:

For research use only, not for use in diagnostic procedure.

### Bioworld Technology, Inc.

Add: 1660 South Highway 100, Suite 500 St. Louis Park, MN 55416, USA.

Email: [info@bioworld.com](mailto:info@bioworld.com)

Tel: 6123263284

Fax: 6122933841

### Bioworld technology, co. Ltd.

Add: No 9, weidi road Qixia District Nanjing, 210046, P. R. China.

Email: [info@biogot.com](mailto:info@biogot.com)

Tel: 0086-025-68037686

Fax: 0086-025-68035151