

MCL1 monoclonal antibody

Catalog: MB10398

Host: Rabbit

Reactivity: Human, Rat

BackGround:

MCL1 a myeloid cell leukemia protein of the Bcl-2 family of proteins. Two alternatively spliced transcripts encoding distinct isoforms have been identified. The longer gene product (isoform 1) enhances cell survival by inhibiting apoptosis while the alternatively spliced shorter gene product (isoform 2) promotes apoptosis and is death-inducing.

Product:

50mM Tris-Glycine(pH 7.4), 0.15M NaCl, 40% Glycerol, 0.01% Sodium azide and 0.05% BSA

Molecular Weight:

Calculated MW: 37 kDa; Observed MW: 40 kDa

Swiss-Prot:

Q07820

Purification&Purity:

Affinity Purified

Applications:

WB: 1/500-1/1000 IF: 1/50-1/200 IP: 1/20

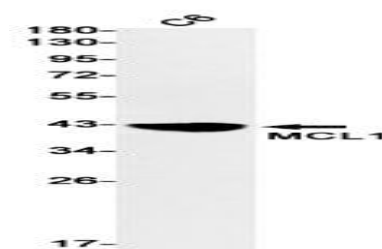
Storage&Stability:

Store at 4 °C short term. Aliquot and store at -20 °C long term. Avoid freeze-thaw cycles.

Isotype:

IgG

DATA:



Western blot analysis of MCL1 in C6 lysates using MCL1 antibody.

Immunocytochemistry analysis of MCL1 in MCF-7 using MCL1 antibody, and DAPI

Note:

For research use only, not for use in diagnostic procedure.

Bioworld Technology, Inc.

Add: 1660 South Highway 100, Suite 500 St. Louis Park, MN 55416, USA.

Email: info@bioworld.com

Tel: 6123263284

Fax: 6122933841

Bioworld technology, co. Ltd.

Add: No 9, weidi road Qixia District Nanjing, 210046, P. R. China.

Email: info@biogol.com

Tel: 0086-025-68037686

Fax: 0086-025-68035151