

Thioredoxin monoclonal antibody

Catalog: MB10327

Host: Rabbit

Reactivity: Human

BackGround:

Thioredoxin (Trx) is a redox protein that is found in several species, such as bacteria, plants and mammals, and contains a conserved active site, consisting of Trp-Cys-Gly-Pro-Cys. Participates in many cellular processes including redox signaling, response to oxidative stress, and protein reduction

Product:

50mM Tris-Glycine(pH 7.4), 0.15M NaCl, 40% Glycerol, 0.01% Sodium azide and 0.05% BSA

Molecular Weight:

Calculated MW: 12 kDa; Observed MW: 12 kDa

Swiss-Prot:

P10599

Purification&Purity:

Affinity Purified

Applications:

WB: 1/1000-1/10000 IHC: 1/50-1/200 IF:
1/100-1/500 IP: 1/20

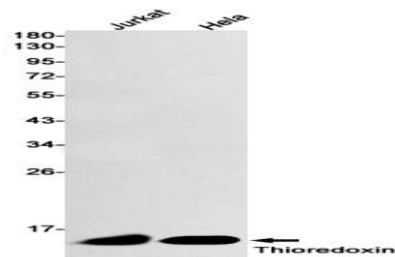
Storage&Stability:

Store at 4 °C short term. Aliquot and store at -20 °C long term. Avoid freeze-thaw cycles.

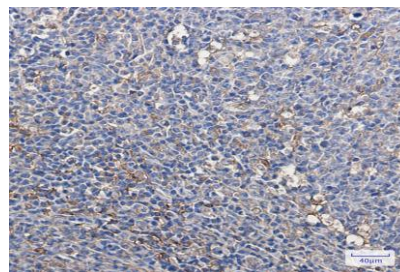
Isotype:

IgG

DATA:



Immunocytochemistry analysis of Thioredoxin in HeLa using Thioredoxin antibody, and DAPI.



Western blot analysis of Thioredoxin in Jurkat, HeLa lysates using Thioredoxin antibody.

Immunohistochemistry analysis of paraffin-embedded Human tonsil using Thioredoxin/TRX antibody. High-pressure and temperature Sodium Citrate pH 6.0 was used for antigen retrieval.

Note:

For research use only, not for use in diagnostic procedure.

Bioworld Technology, Inc.

Add: 1660 South Highway 100, Suite 500 St. Louis Park, MN 55416, USA.

Email: info@bioworld.com

Tel: 6123263284

Fax: 6122933841

Bioworld technology, co. Ltd.

Add: No 9, weidi road Qixia District Nanjing, 210046, P. R. China.

Email: info@biogot.com

Tel: 0086-025-68037686

Fax: 0086-025-68035151