

Lipoamide Dehydrogenase monoclonal antibody

Catalog: MB10305

Host: Rabbit

Reactivity: Human, Mouse, Rat

BackGround:

Lipoamide dehydrogenase is a component of the glycine cleavage system as well as of the alpha-ketoacid dehydrogenase complexes. Involved in the hyperactivation of spermatazoa during capacitation and in the spermatazoal acrosome reaction.

Product:

50mM Tris-Glycine(pH 7.4), 0.15M NaCl, 40% Glycerol, 0.01% Sodium azide and 0.05% BSA

Molecular Weight:

Calculated MW: 54 kDa; Observed MW: 54 kDa

Swiss-Prot:

P09622

Purification&Purity:

Affinity Purified

Applications:

WB: 1/500-1/1000 IHC: 1/50-1/100 IF: 1/50-1/200

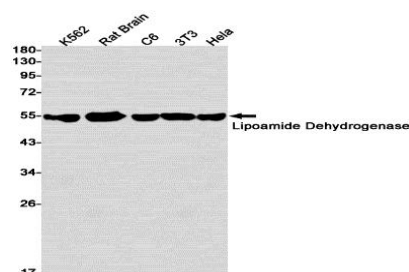
Storage&Stability:

Store at 4 °C short term. Aliquot and store at -20 °C long term. Avoid freeze-thaw cycles.

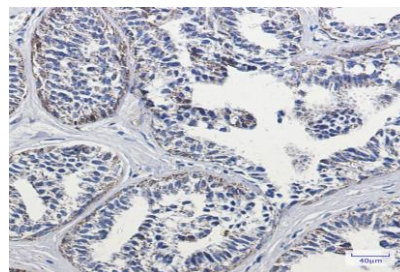
Isotype:

IgG

DATA:



Immunocytochemistry analysis of Lipoamide Dehydrogenase in HeLa using Lipoamide Dehydrogenase antibody, and DAPI.



Western blot analysis of Lipoamide Dehydrogenase in K562, rat Brain, C6, 3T3, HeLa lysates using Lipoamide Dehydrogenase antibody.

Immunohistochemistry analysis of paraffin-embedded Human breast cancer tissue using Lipoamide Dehydrogenase antibody. High-pressure and temperature Sodium Citrate pH 6.0 was used for antigen retrieval.

Note:

For research use only, not for use in diagnostic procedure.

Bioworld Technology, Inc.

Add: 1660 South Highway 100, Suite 500 St. Louis Park, MN 55416, USA.

Email: info@bioworld.com

Tel: 6123263284

Fax: 6122933841

Bioworld technology, co. Ltd.

Add: No 9, weidi road Qixia District Nanjing, 210046, P. R. China.

Email: info@biogot.com

Tel: 0086-025-68037686

Fax: 0086-025-68035151