

PKM2 monoclonal antibody

Catalog: MB0189

Host: Mouse

Reactivity: Human, Mouse, Rat, Monkey

BackGround:

The PKM2 (pyruvate kinase, muscle) gene encodes the M1- and M2-type isoenzymes through alternative splicing events. Both M1- and M2-type isoforms exist as tetramers and are stimulated by fructose 1,6-bisphosphate. In addition, both isoforms exhibit thyroid hormone binding activity and may be referred to as CTHBP (cytosolic thyroid hormone-binding protein) or THBP1.

Product:

0.01M TBS(pH7.4) with 1% BSA, 0.03% Proclin300 and 50% Glycerol.

Molecular Weight:

~ 56 kDa

Swiss-Prot:

P14618

Purification&Purity:

The antibody was affinity-purified from mouse ascites by affinity-chromatography using epitope-specific immunogen and the purity is > 95% (by SDS-PAGE).

Applications:

WB: 1:500~1:1000

IF: 1:50~1:200

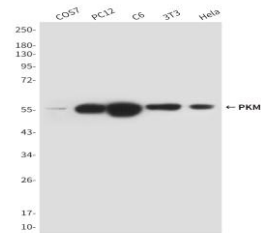
Storage&Stability:

Store at 4 °C short term. Aliquot and store at -20 °C long term. Avoid freeze-thaw cycles.

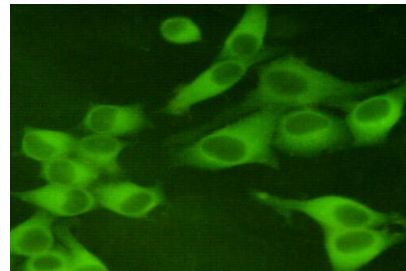
Specificity:

PKM2 monoclonal antibody detects endogenous levels of PKM2 protein.

DATA:



Western blot analysis of PKM2 in COS7, PC-12, C6, 3T3 and HeLa lysates using PKM2 antibody.



Immunocytochemistry analysis of PKM2 (1A7) in HeLa using PKM2 antibody.

Note:

For research use only, not for use in diagnostic procedure.

Bioworld Technology, Inc.

Add: 1660 South Highway 100, Suite 500 St. Louis Park, MN 55416, USA.

Email: info@bioworld.com

Tel: 6123263284

Fax: 6122933841

Bioworld technology, co. Ltd.

Add: No 9, weidi road Qixia District Nanjing, 210046, P. R. China.

Email: info@biogot.com

Tel: 0086-025-68037686

Fax: 0086-025-68035151