

RBBP5 (1C9) monoclonal antibody

Catalog: MB0173

Host: Mouse

Reactivity: Human, Mouse, Rat

BackGround:

This gene encodes a ubiquitously expressed nuclear protein which belongs to a highly conserved subfamily of WD-repeat proteins. The encoded protein binds directly to retinoblastoma protein, which regulates cell proliferation. It interacts preferentially with the underphosphorylated retinoblastoma protein via the E1A-binding pocket B. Three alternatively spliced transcript variants that encode different protein isoforms have been described for this gene.

Product:

Mouse IgG2a, 1mg/ml in PBS with 0.02% sodium azide, 50% glycerol, pH7.2

Molecular Weight:

Predicted band size: 59KDa

Observed band size: 70KDa

Swiss-Prot:

Q15291

Purification&Purity:

The antibody was affinity-purified from mouse ascites by affinity-chromatography using epitope-specific immunogen and the purity is > 95% (by SDS-PAGE).

Applications:

WB: 1:1000

IF: 1:50~200

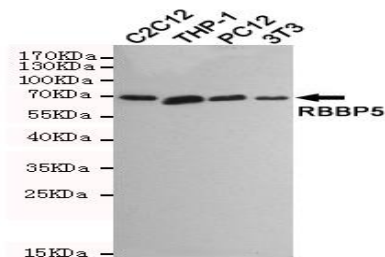
Storage&Stability:

Store at 4 °C short term. Aliquot and store at -20 °C long term. Avoid freeze-thaw cycles.

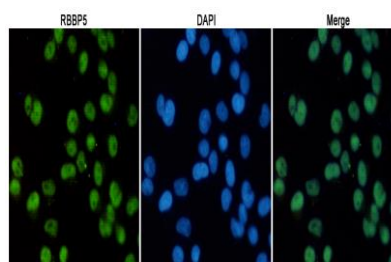
Specificity:

This antibody detects endogenous levels of RBBP5 and does not cross-react with related proteins.

DATA:



Western blot detection of RBBP5 in C2C12, THP-1, PC12 and 3T3 cell lysates using RBBP5 mouse mAb (1:1000 diluted).



Immunofluorescent analysis of HeLa cells fixed with 4% Paraformaldehyde and using anti-RBBP5 mouse mAb (dilution 1:100). DAPI was used to stain nucleus (blue).

Note:

For research use only, not for use in diagnostic procedure.

Bioworld Technology, Inc.

Add: 1660 South Highway 100, Suite 500 St. Louis Park, MN 55416, USA.

Email: info@bioworld.com

Tel: 6123263284

Fax: 6122933841

Bioworld technology, co. Ltd.

Add: No 9, weidi road Qixia District Nanjing, 210046, P. R. China.

Email: info@biogot.com

Tel: 0086-025-68037686

Fax: 0086-025-68035151