

Cyclin H monoclonal antibody

Catalog: MB0018

Host: Mouse

Reactivity: Human

BackGround:

Cyclin H belongs to the highly conserved cyclin family, and are regulators of CDK kinases. Different cyclins exhibit distinct expression and degradation patterns which contribute to the temporal coordination of each mitotic event. Cyclin H forms a complex with CDK7 kinase and ring finger protein MAT1. The kinase complex is able to phosphorylate CDK2 and CDC2 kinases, and thus functions as a CDK-activating kinase (CAK). Cyclin H and its kinase partner are components of TFIIH, as well as RNA polymerase II protein complexes.

Product:

1mg/ml in PBS with 0.02% sodium azide, 50% glycerol, pH7.2

Molecular Weight:

Predicted band size:38KDa

Observed band size:38KDa

Swiss-Prot:

P51946

Purification&Purity:

The antibody was affinity-purified from mouse ascites by affinity-chromatography using epitope-specific immunogen and the purity is > 95% (by SDS-PAGE).

Applications:

WB: 1:1000

IP: 1:50~1:200

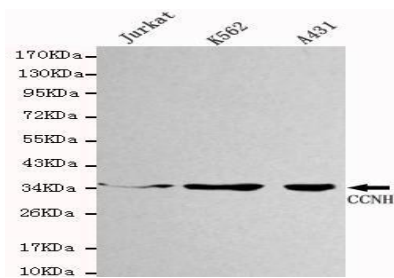
Storage&Stability:

Store at 4 °C short term. Aliquot and store at -20 °C long term. Avoid freeze-thaw cycles.

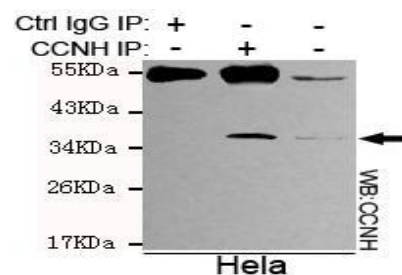
Specificity:

This antibody detects endogenous levels of CCNH and does not cross-react with related proteins

DATA:



Western blot detection of Cyclin H in Jurkat, K562&A431 cell lysates using Cyclin H antibody (1:1000 diluted).



Immunoprecipitation analysis of HeLa cell lysates using Cyclin H antibody

Note:

For research use only, not for use in diagnostic procedure.

Bioworld Technology, Inc.

Add: 1660 South Highway 100, Suite 500 St. Louis Park, MN 55416, USA.

Email: info@bioworld.com

Tel: 6123263284

Fax: 6122933841

Bioworld technology, co. Ltd.

Add: No 9, weidi road Qixia District Nanjing, 210046, P. R. China.

Email: info@biogot.com

Tel: 0086-025-68037686

Fax: 0086-025-68035151