

## RAC1 monoclonal antibody

Catalog: LM2177

Host: Mouse

Reactivity: Human, Mouse, Rat

### Background:

Plasma membrane-associated small GTPase which cycles between active GTP-bound and inactive GDP-bound states. In its active state, binds to a variety of effector proteins to regulate cellular responses such as secretory processes, phagocytosis of apoptotic cells, epithelial cell polarization and growth-factor induced formation of membrane ruffles. Rac1 p21/rho GDI heterodimer is the active component of the cytosolic factor sigma 1, which is involved in stimulation of the NADPH oxidase activity in macrophages. Essential for the SPATA13-mediated regulation of cell migration and adhesion assembly and disassembly. Stimulates PKN2 kinase activity. In concert with RAB7A, plays a role in regulating the formation of RBs (ruffled borders) in osteoclasts. In glioma cells, promotes cell migration and invasion. In podocytes, promotes nuclear shuttling of NR3C2; this modulation is required for a proper kidney functioning.

### Product:

Mouse IgG2b, 1mg/ml in PBS with 0.02% sodium azide, pH7.2

### Molecular Weight:

~ 23 kDa

### Swiss-Prot:

P63000

### Purification&Purity:

This antibody is purified through a protein G column, followed by dialysis against PBS.

### Applications:

WB: 1:500~1000

IHC-P: 1:100~500

FCM: 1:100

### Storage&Stability:

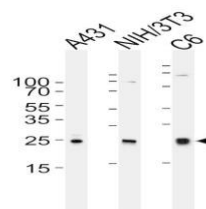
Store at 4 °C short term. Aliquot and store at -20 °C long

term. Avoid freeze-thaw cycles.

### Specificity:

RAC1 monoclonal antibody detects endogenous levels of RAC1 protein.

### DATA:

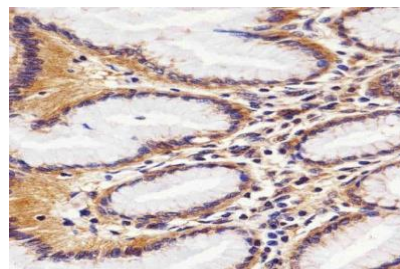


Western blot (WB) analysis of RAC1 monoclonal antibody

Lane1:A431 whole cell lysate

Lane2:NIH/3T3 whole cell lysate

Lane3:C6 whole cell lysate



Immunohistochemical analysis of paraffin-embedded H. stomach section

using RAC1 monoclonal antibody LM2177 was diluted at 1:25 dilution.

A peroxidase-conjugated goat anti-mouse IgG at 1:400 dilution was

used as the secondary antibody, followed by DAB staining.

### Note:

For research use only, not for use in diagnostic procedure.

### Bioworld Technology, Inc.

Add: 1660 South Highway 100, Suite 500 St. Louis Park, MN 55416, USA.

Email: [info@bioworld.com](mailto:info@bioworld.com)

Tel: 6123263284

Fax: 6122933841

### Bioworld technology, co. Ltd.

Add: No 9, weidi road Qixia District Nanjing, 210046, P. R. China.

Email: [info@biogot.com](mailto:info@biogot.com)

Tel: 0086-025-68037686

Fax: 0086-025-68035151