

S-ECD/RBD monoclonal antibody (2)

Catalog: HMB002-Y

Host: Human

Reactivity: COVID-19

BackGround:

Fully humanized monoclonal antibody paired with human monoclonal antibody

LOCUS:QHD43416 1273aa linear VRL 18-MAR-2020

DEFINITION: S-ECD/RBD protein [Severe acute respiratory syndrome coronavirus 2]

ACCESSION:QHD43416

VERSION:QHD43416.1

DBSOURCE:accession MN908947.3

SOURCE:Severe acute respiratory syndrome coronavirus 2 (SARS-CoV2)

ORGANISM:Viruses; Riboviria; Nidovirales; Coronaviridae; Orthocoronavirinae; Betacoronavirus; Sarbecovirus.

Product:

1mg/ml in PBS with 0.02% sodium azide,pH7.2

Size:

100ug/1mg

Swiss-Prot:

QHD43416.1

Purification&Purity:

The antibody was purified from 293f recombinant protein and the purity is > 95% (by SDS-PAGE).

Applications:

ELISA: ECD-1:320000;RBD-1:80000

WB: 1:500~1000

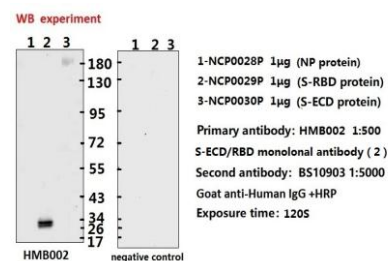
Neutralization

Storage&Stability:

Store at 4 °C short term. Aliquot and store at -20 °C long term. Avoid freeze-thaw cycles.

Specificity:

S-ECD/RBD mAb detects endogenous levels of S-ECD/RBD protein.

DATA:


ELISA experiment

	1	2	
A	2.206	2.611	1:1000
B	2.159	2.336	1:10000
C	2.434	2.09	1:20000
D	2.37	1.671	1:40000
E	2.062	1.201	1:80000
F	1.756	0.777	1:160000
G	1.234	0.439	1:320000
H	0.337	0.068	Blank control

NCP0028P NCP0029P

1.Coating original concentration: 2µg/ml,100ul/whole sample is S-RBD protein (NCP0028P) and S-ECD protein (NCP0030P)
2.Primary antibody: HMB002 S-ECD/RBD monoclonal antibody (2)
3.Second antibody: BS10903 Goat anti-Human IgG +HRP 1:10000
4.Develop :15min 100ul/whole
5.Stop/stop buffer 50ul/whole
6.ELISA result are shown in the figure

Note:

For research use only, not for use in diagnostic procedure.

Bioworld Technology, Inc.

Add: 1660 South Highway 100, Suite 500 St. Louis Park, MN 55416,USA.

Email: info@bioworld.com

Tel: 6123263284

Fax: 6122933841

Bioworld technology, co. Ltd.

Add: No 9, weidi road Qixia District Nanjing, 210046, P. R. China.

Email: info@biogot.com

Tel: 0086-025-68037686

Fax: 0086-025-68035151