

## S-ECD/RBD (2) monoclonal antibody

Catalog: HMB002-N

Host: Human

Reactivity: CoV-19

### BackGround:

Fully humanized monoclonal antibody paired with human monoclonal antibody

LOCUS:QHD43416 1273aa linear VRL 18-MAR-2020

DEFINITION: S-ECD/RBD protein [Severe acute respiratory syndrome coronavirus 2]

ACCESSION:QHD43416

VERSION:QHD43416.1

DBSOURCE:accession MN908947.3

SOURCE:Severe acute respiratory syndrome coronavirus 2 (SARS-CoV-2)

ORGANISM:Viruses; Riboviria; Nidovirales; Coronaviridae; Orthocoronavirinae; Betacoronavirus; Sarbecovirus.

### Product:

2mg/ml in PBS,pH7.2

### Size:

100ug/1mg

### Swiss-Prot:

QHD43416.1

### Purification&Purity:

The antibody was purified from 293f recombinant protein and the purity is > 95% (by SDS-PAGE).

### Applications:

ELISA: ECD-1:320000;RBD-1:80000

WB: 1:1000~2000

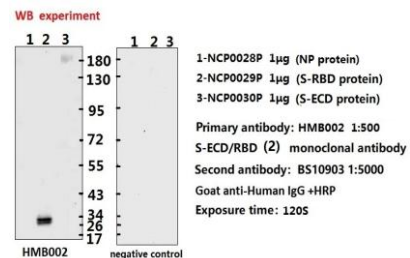
### Storage&Stability:

Store at 4 °C short term. Aliquot and store at -20 °C long term. Avoid freeze-thaw cycles.

### Specificity:

S-ECD/RBD mAb detects endogenous levels of S-ECD/RBD protein.

### DATA:



**ELISA experiment**

	1	2	
A	2.206	2.611	1:1000
B	2.159	2.336	1:10000
C	2.434	2.09	1:20000
D	2.37	1.671	1:40000
E	2.082	1.201	1:80000
F	1.756	0.777	1:160000
G	1.234	0.439	1:320000
H	0.337	0.068	Blank control

NCP0030P NCP0029P

1.Coating original concentration: 2ug/ml,100ul/whole sample is S-RBD protein (NCP0028P) and S-ECD protein (NCP0030P)  
2.Primary antibody: HMB002 S-ECD/RBD monoclonal antibody (2)  
3.Second antibody: BS10903 Goat anti-Human IgG +HRP 1:10000  
4.Develop 15min 100ul/whole  
5.Stop/stop buffer 50ul/whole  
6.ELISA result are shown in the figure

### Note:

For research use only, not for use in diagnostic procedure.

### Bioworld Technology, Inc.

Add: 1660 South Highway 100, Suite 500 St. Louis Park, MN 55416,USA.

Email: [info@bioworld.com](mailto:info@bioworld.com)

Tel: 6123263284

Fax: 6122933841

### Bioworld technology, co. Ltd.

Add: No 9, weidi road Qixia District Nanjing, 210046, P. R. China.

Email: [info@biogot.com](mailto:info@biogot.com)

Tel: 0086-025-68037686

Fax: 0086-025-68035151