

## S-ECD/RBD monoclonal antibody (1)

Catalog: HMB001-Y

Host: Human

Reactivity: COVID-19

### BackGround:

Fully humanized monoclonal antibody paired with human monoclonal antibody

LOCUS:QHD43416 1273aa linear VRL 18-MAR-2020

DEFINITION: S-ECD/RBD protein [Severe acute respiratory syndrome coronavirus 2]

ACCESSION:QHD43416

VERSION:QHD43416.1

DBSOURCE:accession MN908947.3

SOURCE:Severe acute respiratory syndrome coronavirus 2 (SARS-CoV2)

ORGANISM:Viruses; Riboviria; Nidovirales; Cornidovirineae; Coronaviridae;Orthocoronavirinae; Betacoronavirus; Sarbecovirus.

### Product:

1mg/ml in PBS with 0.02% sodium azide,pH7.2

### Size:

100ug/1mg

### Swiss-Prot:

QHD43416.1

### Purification&Purity:

The antibody was purified from 293f recombinant protein and the purity is > 95% (by SDS-PAGE).

### Applications:

ELISA: 1:320000

WB: 1:1000~2000

Neutralization

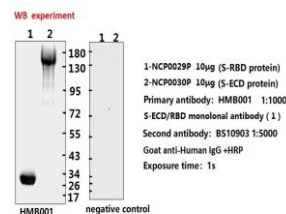
### Storage&Stability:

Store at 4 °C short term. Aliquot and store at -20 °C long term. Avoid freeze-thaw cycles.

### Specificity:

S-ECD/RBD mAb detects endogenous levels of S-ECD/RBD protein.

### DATA:



**ELISA experiment**

	1	2	
A	2347	2399	1:1000
B	2036	2216	1:10000
C	2297	2139	1:20000
D	2441	2624	1:40000
E	2104	2292	1:80000
F	1764	1713	1:160000
G	1196	1213	1:320000
H	0.105	0.096	Blank control

NCP0030P NCP0029P

- Coating original concentration: 2ug/ml,100ul/hole sample is S-RBD protein (NCP0029P) and S-ECD protein (NCP0030P)
- Primary antibody: HMB001 S-ECD/RBD monoclonal antibody (1)
- Second antibody: BS10903 Goat anti-Human IgG+HRP 1:10000
- Develop:15min: 100ul/hole
- Stop:stop buffer: 50ul/hole
- ELISA result are shown in the figure

### Note:

For research use only, not for use in diagnostic procedure.

### Bioworld Technology, Inc.

Add: 1660 South Highway 100, Suite 500 St. Louis Park, MN 55416,USA.

Email: [info@bioworld.com](mailto:info@bioworld.com)

Tel: 6123263284

Fax: 6122933841

### Bioworld technology, co. Ltd.

Add: No 9, weidi road Qixia District Nanjing, 210046, P. R. China.

Email: [info@biogot.com](mailto:info@biogot.com)

Tel: 0086-025-68037686

Fax: 0086-025-68035151