

S-ECD/RBD (1) monoclonal antibody

Catalog: HMB001-N

Host: Human

Reactivity: CoV-19

BackGround:

Fully humanized monoclonal antibody paired with human monoclonal antibody

LOCUS:QHD43416 1273aa linear VRL 18-MAR-2020

DEFINITION: S-ECD/RBD protein [Severe acute respiratory syndrome coronavirus 2]

ACCESSION:QHD43416

VERSION:QHD43416.1

DBSOURCE:accession MN908947.3

SOURCE:Severe acute respiratory syndrome coronavirus 2 (SARS-CoV-2)

ORGANISM:Viruses; Riboviria; Nidovirales; Coronaviridae; Orthocoronavirinae; Betacoronavirus; Sarbecovirus.

Product:

2mg/ml in PBS,pH7.2

Size:

100ug/1mg

Swiss-Prot:

QHD43416.1

Purification&Purity:

The antibody was purified from 293f recombinant protein and the purity is > 95% (by SDS-PAGE).

Applications:

ELISA: 1:320000

WB: 1:1000~2000

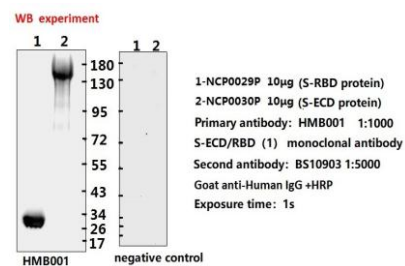
Storage&Stability:

Store at 4 °C short term. Aliquot and store at -20 °C long term. Avoid freeze-thaw cycles.

Specificity:

S-ECD/RBD mAb detects endogenous levels of S-ECD/RBD protein.

DATA:



ELISA experiment

	1	2	
A	2347	2399	1:1000
B	2036	2216	1:10000
C	2297	2139	1:20000
D	2441	2624	1:40000
E	2104	2292	1:80000
F	1764	1713	1:160000
G	1186	1213	1:320000
H	0.105	0.066	Blank control

1.Coating original concentration: 2ug/ml,100ul/hole sample is S-RBD protein (NCP0029P) and S-ECD protein (NCP0030P)
 2.Primary antibody: HMB001 S-ECD/RBD monoclonal antibody (1)
 3.Second antibody: BS10903 Goat anti-Human IgG +HRP 1:10000
 4.Develop 15min 100ul/hole
 5.Stop-stop buffer 50ul/hole
 6.ELISA result are shown in the figure

Note:

For research use only, not for use in diagnostic procedure.

Bioworld Technology, Inc.

Add: 1660 South Highway 100, Suite 500 St. Louis Park, MN 55416,USA.

Email: info@bioworld.com

Tel: 6123263284

Fax: 6122933841

Bioworld technology, co. Ltd.

Add: No 9, weidi road Qixia District Nanjing, 210046, P. R. China.

Email: info@biogot.com

Tel: 0086-025-68037686

Fax: 0086-025-68035151