

## LFR polyclonal antibody

Catalog: GCP71

Host: Rabbit

Reactivity: Pig, Human

### BackGround:

Intelectin-1, also known as ITLN1, INTL, Omentin or LFR, is a 313 amino acid protein that contains one fibrinogen C-terminal domain and is either secreted or lipid-anchored to the cell membrane. Highly expressed in small intestine and adipose tissue and present at lower levels in testis, heart, pancreas, colon and skeletal muscle, Intelectin-1 exists as a disulfide-linked homotrimer that functions to enhance Insulin-stimulated glucose uptake and is also thought to participate in host defense against microorganisms. In addition to its role in glucose regulation and immune system function, Intelectin-1 may also be involved in iron metabolism and obesity regulation in adults. Intelectin-2 shares 85% amino acid identity with Intelectin-1 and, like Intelectin-1, is a secreted protein that contains one fibrinogen C-terminal domain and is thought to play a role in the host defense system. While Intelectin-1 is present in a variety of tissues, Intelectin-2 exists only in the small intestine.

### Product:

Rabbit IgG, 1mg/ml in PBS with 0.02% sodium azide, 50% glycerol, pH 7.4.

### Molecular Weight:

~ 35 kDa

### Swiss-Prot:

Q8WWA0

### Purification&Purity:

The antibody was affinity-purified from rabbit antiserum by affinity-chromatography using epitope-specific immunogen and the purity is > 95% (by SDS-PAGE).

### Applications:

WB: 1:2000~1:5000

IHC: 1:50~1:200

### Storage&Stability:

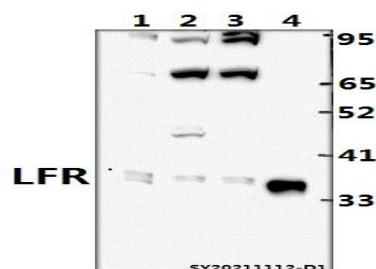
Store at 4 °C short term. Aliquot and store at -20 °C long

term. Avoid freeze-thaw cycles.

### Specificity:

LFR polyclonal antibody detects endogenous levels of LFR protein.

### DATA:



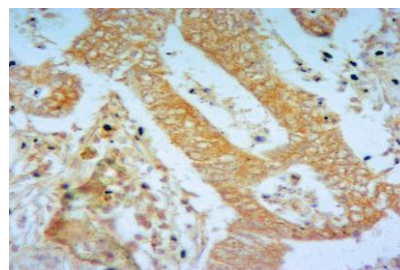
Western blot (WB) analysis of LFR polyclonal antibody at 1:2000 dilution

Lane1: The Lung tissue lysate of Pig (40ug)

Lane2: HCT116 whole cell lysate (40ug)

Lane3: Panc1 whole cell lysate (40ug)

Lane4: The Heart tissue lysate of Pig (20ug)



Immunohistochemistry of paraffin-embedded Human Colorectal cancer using LFR antibody at dilution of 1:50.

### Note:

For research use only, not for use in diagnostic procedure.

### Bioworld Technology, Inc.

Add: 1660 South Highway 100, Suite 500 St. Louis Park, MN 55416, USA.

Email: [info@bioworld.com](mailto:info@bioworld.com)

Tel: 6123263284

Fax: 6122933841

### Bioworld technology, co. Ltd.

Add: No 9, weidi road Qixia District Nanjing, 210046, P. R. China.

Email: [info@biogot.com](mailto:info@biogot.com)

Tel: 0086-025-68037686

Fax: 0086-025-68035151