

**LAMP1 polyclonal antibody**

Catalog: BZ16748

Host: Rabbit

Reactivity: Human

**BackGround:**

LAMP1 and LAMP2 (lysosome-associated membrane protein 1 and 2) are two abundant lysosomal membrane proteins. Both are transmembrane proteins and heavily glycosylated at the amino-terminal luminal side of the lysosomal inner leaflet, which protects the proteins from proteolysis. The carboxy terminus of LAMP1 is exposed to the cytoplasm and contains a tyrosine sorting motif which targets LAMP to lysosomal membranes.

**Product:**

Rabbit IgG in phosphate buffered saline, pH 7.4, 150mM NaCl, 0.02% sodium azide and 50% glycerol.

**Molecular Weight:**

Calculated MW: 45 kDa; Observed MW: 120 kDa

**Swiss-Prot:**

P11279

**Purification&Purity:**

Affinity Purified

**Applications:**

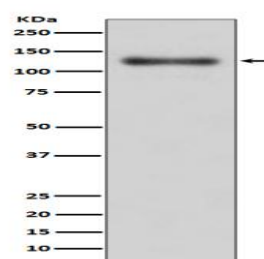
WB: 1/500-1/1000 IHC: 1/50-1/100

**Storage&Stability:**

Store at 4 °C short term. Aliquot and store at -20 °C long term. Avoid freeze-thaw cycles.

**Isotype:**

IgG

**DATA:**

Western blot analysis of LAMP1 in A431 lysates using LAMP1 antibody.

**Note:**

For research use only, not for use in diagnostic procedure.

**Bioworld Technology, Inc.**

Add: 1660 South Highway 100, Suite 500 St. Louis Park, MN 55416, USA.

Email: [info@bioworld.com](mailto:info@bioworld.com)

Tel: 6123263284

Fax: 6122933841

**Bioworld technology, co. Ltd.**

Add: No 9, weidi road Qixia District Nanjing, 210046, P. R. China.

Email: [info@biogol.com](mailto:info@biogol.com)

Tel: 0086-025-68037686

Fax: 0086-025-68035151