

Phospho-BRAF (Thr401) polyclonal antibody

Catalog: BZ16730

Host: Rabbit

Reactivity: Human, Mouse, Rat

BackGround:

Involved in the transduction of mitogenic signals from the cell membrane to the nucleus. May play a role in the postsynaptic responses of hippocampal neuron. Frequently mutated in thyroid cancers, skin melanomas and at lower frequency in a wide range of human cancers. An activating mutation, mimicking phosphorylation of the activation loop, is seen in 60% of malignant melanoma samples. Raf mutations are generally exclusive to Ras activating mutations.

Product:

Rabbit IgG in phosphate buffered saline, pH 7.4, 150mM NaCl, 0.02% sodium azide and 50% glycerol.

Molecular Weight:

Calculated MW: 84 kDa; Observed MW: 84 kDa

Swiss-Prot:

P15056

Purification&Purity:

Affinity Purified

Applications:

WB: 1/500-1/1000 IF: 1/50-1/200 IP: 1/20

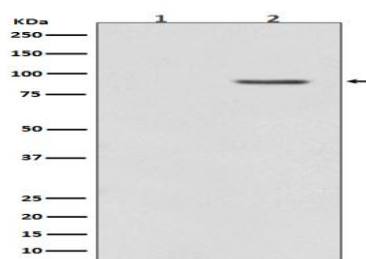
Storage&Stability:

Store at 4 °C short term. Aliquot and store at -20 °C long term. Avoid freeze-thaw cycles.

Isotype:

IgG

DATA:



Western blot analysis of Phospho-BRAF in PC-12 lysates; PC-12 lysates treated with TPA using Phospho-BRAF antibody.

Note:

For research use only, not for use in diagnostic procedure.

Bioworld Technology, Inc.

Add: 1660 South Highway 100, Suite 500 St. Louis Park, MN 55416, USA.

Email: info@bioworld.com

Tel: 6123263284

Fax: 6122933841

Bioworld technology, co. Ltd.

Add: No 9, weidi road Qixia District Nanjing, 210046, P. R. China.

Email: info@biogot.com

Tel: 0086-025-68037686

Fax: 0086-025-68035151