

Cyclin A1/A2 polyclonal antibody

Catalog: BZ16706

Host: Rabbit

Reactivity: Human

BackGround:

May primarily function in the control of the germline meiotic cell cycle and additionally in the control of mitotic cell cycle in some somatic cells. Essential for the control of the cell cycle at the G1/S (start) and the G2/M (mitosis) transitions.

Product:

Rabbit IgG in phosphate buffered saline , pH 7.4, 150mM NaCl, 0.02% sodium azide and 50% glycerol.

Molecular Weight:

Calculated MW: 52,49 kDa; Observed MW: 52,49 kDa

Swiss-Prot:

P20248/P78396

Purification&Purity:

Affinity Purified

Applications:

WB: 1/500-1/1000 IHC: 1/50-1/100 IP: 1/20

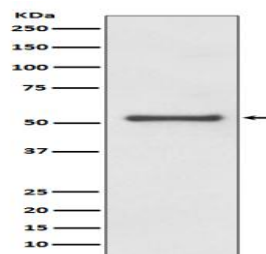
Storage&Stability:

Store at 4 °C short term. Aliquot and store at -20 °C long term. Avoid freeze-thaw cycles.

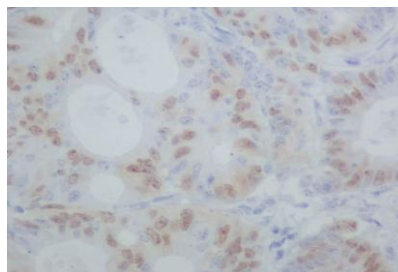
Isotype:

IgG

DATA:



Western blot analysis of Cyclin A1/A2 in HeLa lysates using Cyclin A1/A2 antibody.



Immunohistochemistry analysis of paraffin-embedded Human colon cancer using Cyclin A1/A2 antibody. High-pressure and temperature Sodium Citrate pH 6.0 was used for antigen retrieval.

Note:

For research use only, not for use in diagnostic procedure.

Bioworld Technology, Inc.

Add: 1660 South Highway 100, Suite 500 St. Louis Park, MN 55416, USA.

Email: info@bioworld.com

Tel: 6123263284

Fax: 6122933841

Bioworld technology, co. Ltd.

Add: No 9, weidi road Qixia District Nanjing, 210046, P. R. China.

Email: info@biogot.com

Tel: 0086-025-68037686

Fax: 0086-025-68035151