

## Junctional Adhesion Molecule 1 polyclonal antibody

Catalog: BZ16663

Host: Rabbit

Reactivity: Human, Mouse, Rat

### BackGround:

Seems to play a role in epithelial tight junction formation. Appears early in primordial forms of cell junctions and recruits PAR3. The association of the PAR6-PAR3 complex may prevent the interaction of PAR3 with JAM1, thereby preventing tight junction assembly (By similarity). Plays a role in regulating monocyte transmigration involved in integrity of epithelial barrier. Involved in platelet activation. In case of orthoreovirus infection, serves as receptor for the virus.

### Product:

Rabbit IgG in phosphate buffered saline, pH 7.4, 150mM NaCl, 0.02% sodium azide and 50% glycerol.

### Molecular Weight:

Calculated MW: 33 kDa; Observed MW: 33 kDa

### Swiss-Prot:

Q9Y624

### Purification&Purity:

Affinity Purified

### Applications:

WB: 1/500-1/1000 IHC: 1/50-1/100

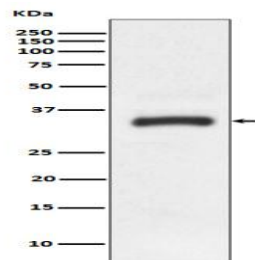
### Storage&Stability:

Store at 4 °C short term. Aliquot and store at -20 °C long term. Avoid freeze-thaw cycles.

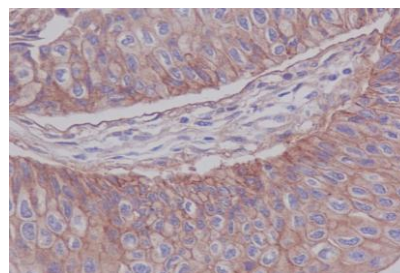
### Isotype:

IgG

### DATA:



Western blot analysis of JAM1 in HeLa lysates using Junctional Adhesion Molecule 1 antibody.



Immunohistochemistry analysis of paraffin-embedded Human bladder cancer using JAM1 antibody. High-pressure and temperature Sodium Citrate pH 6.0 was used for antigen retrieval.

### Note:

For research use only, not for use in diagnostic procedure.

### Bioworld Technology, Inc.

Add: 1660 South Highway 100, Suite 500 St. Louis Park, MN 55416, USA.

Email: [info@bioworld.com](mailto:info@bioworld.com)

Tel: 6123263284

Fax: 6122933841

### Bioworld technology, co. Ltd.

Add: No 9, weidi road Qixia District Nanjing, 210046, P. R. China.

Email: [info@biogol.com](mailto:info@biogol.com)

Tel: 0086-025-68037686

Fax: 0086-025-68035151