

Midkine polyclonal antibody

Catalog: BZ16642

Host: Rabbit

Reactivity: Human

BackGround:

Midkine, or MK, is a heparin-binding molecule involved in the regulation of growth and differentiation during embryogenesis. MK expression is tightly regulated during embryonic development by steroid receptors of the retinoic acid superfamily. The mature human MK protein is 118 amino acids in length and contains five intrachain disulfide bonds. MK is a non-glycosylated protein that shows greater than 87% identity between human and mouse.

Product:

Rabbit IgG in phosphate buffered saline , pH 7.4, 150mM NaCl, 0.02% sodium azide and 50% glycerol.

Molecular Weight:

Calculated MW: 16 kDa; Observed MW: 16 kDa

Swiss-Prot:

P21741

Purification&Purity:

Affinity Purified

Applications:

WB: 1/500-1/1000 IHC: 1/50-1/100 IF: 1/50-1/200
IP: 1/20

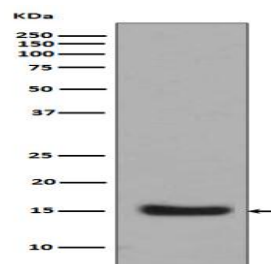
Storage&Stability:

Store at 4 °C short term. Aliquot and store at -20 °C long term. Avoid freeze-thaw cycles.

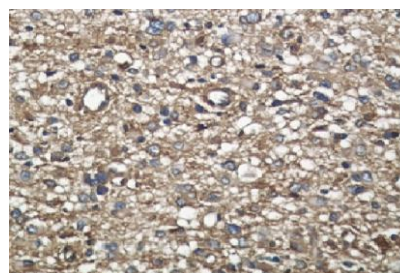
Isotype:

IgG

DATA:



Western blot analysis of Midkine in Midkine Recombinant protein using Midkine antibody.



Immunohistochemistry analysis of paraffin-embedded Human liver carcinoma using Midkine antibody. High-pressure and temperature Sodium Citrate pH 6.0 was used for antigen retrieval.

Note:

For research use only, not for use in diagnostic procedure.

Bioworld Technology, Inc.

Add: 1660 South Highway 100, Suite 500 St. Louis Park, MN 55416, USA.

Email: info@bioworld.com

Tel: 6123263284

Fax: 6122933841

Bioworld technology, co. Ltd.

Add: No 9, weidi road Qixia District Nanjing, 210046, P. R. China.

Email: info@biogot.com

Tel: 0086-025-68037686

Fax: 0086-025-68035151