

NF-κB p65 (Ab-536) polyclonal antibody

Catalog: BSP1257

Host: Rabbit

Reactivity: Human,Rat,Mouse

Background:

Transcription factors of the nuclear factor κB (NF-κB)/Rel family play a pivotal role in inflammatory and immune responses. There are five family members in mammals: RelA, c-Rel, RelB, NF-κB1 (p105/p50), and NF-κB2 (p100/p52). Both p105 and p100 are proteolytically processed by the proteasome to produce p50 and p52, respectively. Rel proteins bind p50 and p52 to form dimeric complexes that bind DNA and regulate transcription. In unstimulated cells, NF-κB is sequestered in the cytoplasm by IκB inhibitory proteins. NF-κB-activating agents can induce the phosphorylation of IκB proteins, targeting them for rapid degradation through the ubiquitin-proteasome pathway and releasing NF-κB to enter the nucleus where it regulates gene expression. NIK and IKKα (IKK1) regulate the phosphorylation and processing of NF-κB2 (p100) to produce p52, which translocates to the nucleus.

Product:

Rabbit IgG, 1mg/ml in PBS with 0.02% sodium azide, 50% glycerol, pH7.2.

Molecular Weight:

~ 65 kDa

Swiss-Prot:

Q04206

Purification&Purity:

The antibody was affinity-purified from rabbit antiserum by affinity-chromatography using epitope-specific immunogen and the purity is > 95%

Applications:

WB: 1:2000~1:5000

IP: 1:50~1:200

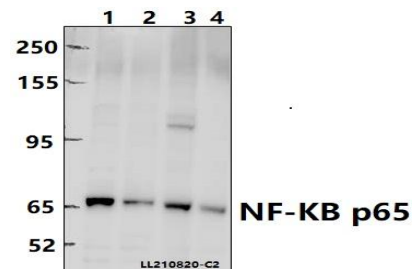
Storage&Stability:

Store at 4 °C short term. Aliquot and store at -20 °C long term. Avoid freeze-thaw cycles.

Specificity:

NF-κB p65 (Ab-536) polyclonal antibody detects endogenous levels of NF-κB p65 protein.

DATA:



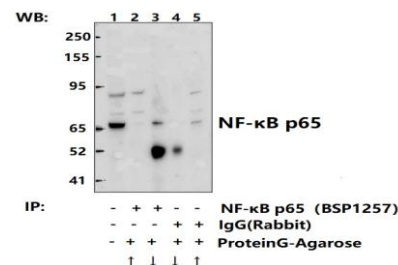
Western blot (WB) analysis of NF-κB p65 (Ab-536) polyclonal antibody at 1:2000 dilution

Lane1:MCF-7 whole cell lysate(40ug)

Lane2:U-87MG whole cell lysate(40ug)

Lane3:SP2/0 whole cell lysate(40ug)

Lane4:H9C2 whole cell lysate(40ug)



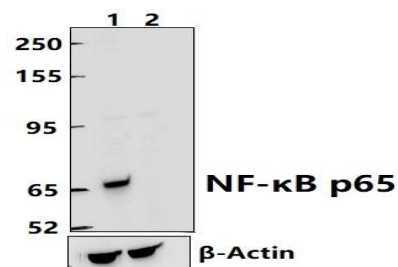
Immunoprecipitation of HEK293T cell lysates using NF-κB p65

(Ab-536) pAb (Sephacrose Bead Conjugate)#BD0048 (lane 2 and lane 3)

and Nonspecific IgG Control (Sephacrose Bead Conjugate)#BD0048

(lane 4 and lane 5). Lane 1 is 30% input. The western blot was probed

using NF-κB p65 (Ab-536) pAb #BSP1257.



Western blot (WB) analysis of NF-κB p65 (Ab-536) polyclonal anti-

Bioworld Technology, Inc.

Add: 1660 South Highway 100, Suite 500 St. Louis Park, MN 55416, USA.

Email: info@bioworld.com

Tel: 6123263284

Fax: 6122933841

Bioworld technology, co. Ltd.

Add: No 9, weidi road Qixia District Nanjing, 210046, P. R. China.

Email: info@biogot.com

Tel: 0086-025-68037686

Fax: 0086-025-68035151



PRODUCT DATA SHEET

Bioworld Technology, Inc.

body at 1:1000 dilution

Lane1:A549 whole cell lysate(40ug)

Lane2:NF-KB p65 knockout A549 whole cell lysate(40ug)

Note:

For research use only, not for use in diagnostic procedure.

Bioworld Technology, Inc.

Add: 1660 South Highway 100, Suite 500 St. Louis Park,
MN 55416, USA.

Email: info@bioworld.com

Tel: 6123263284

Fax: 6122933841

Bioworld technology, co. Ltd.

Add: No 9, weidi road Qixia District Nanjing, 210046,
P. R. China.

Email: info@biogot.com

Tel: 0086-025-68037686

Fax: 0086-025-68035151