

## GLUT1 Rabbit monoclonal antibody

Catalog: BS9806M

Host: Rabbit

Reactivity: Human, Mouse, Rat

### BackGround:

Glucose is fundamental to the metabolism of mammalian cells. Its passage across cell membranes is mediated by a family of transporters termed glucose transporters or Gluts. In adipose and muscle tissue, insulin stimulates a rapid and dramatic increase in glucose uptake, which is largely due to the redistribution of the insulin-inducible glucose transporter, Glut4. In response to insulin, Glut4 is quickly shuttled from an intracellular storage site to the plasma membrane where it binds glucose. In contrast, the ubiquitously expressed glucose transporter Glut1 is constitutively targeted to the plasma membrane, and shows a much less dramatic translocation in response to insulin.

### Product:

Rabbit IgG, 1mg/ml in PBS with 0.02% sodium azide, 50% glycerol, pH7.2

### Molecular Weight:

~ 54 kDa

### Swiss-Prot:

P11166

### Purification&Purity:

Protein A affinity purified

### Applications:

WB: 1:500-1:1000

IHC/ICC/IF: 1:50-1:200

FC: 1:10-1:100

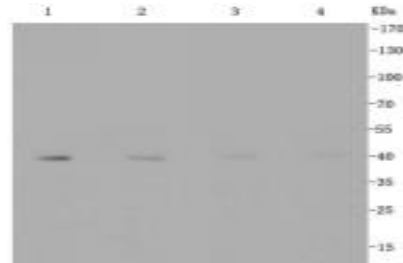
### Storage&Stability:

Store at 4 °C short term. Aliquot and store at -20 °C long term. Avoid freeze-thaw cycles.

### Specificity:

This antibody detects endogenous levels of GLUT1 and does not cross-react with related proteins.

### DATA:



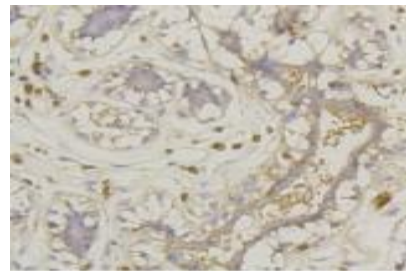
Western blot (WB) analysis of GLUT1 Rabbit mAb at 1:1000 dilution

Lane1:Hela whole cell lysate

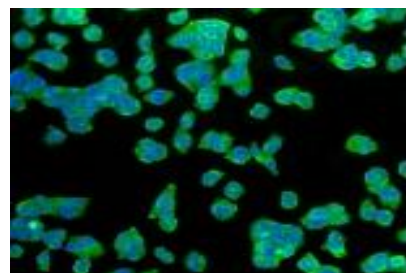
Lane2:MCF-7 whole cell lysate

Lane3:Jurkat whole cell lysate

Lane4:NIH/3T3 whole cell lysate



Immunohistochemical analysis of paraffin-embedded human liver tissue using anti-GLUT1 antibody. Counter stained with hematoxylin.



ICC staining GLUT1 in HeLa cells (green). The nuclear counter stain is DAPI (blue). Cells were fixed in paraformaldehyde, permeabilised with 0.25% Triton \*100/PBS.

### Bioworld Technology, Inc.

Add: 1660 South Highway 100, Suite 500 St. Louis Park, MN 55416, USA.

Email: [info@bioworld.com](mailto:info@bioworld.com)

Tel: 6123263284

Fax: 6122933841

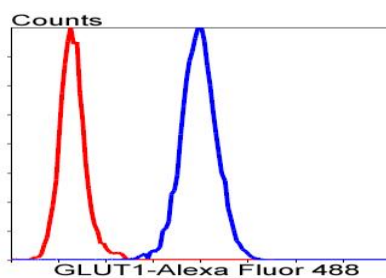
### Bioworld technology, co. Ltd.

Add: No 9, weidi road Qixia District Nanjing, 210046, P. R. China.

Email: [info@biogot.com](mailto:info@biogot.com)

Tel: 0086-025-68037686

Fax: 0086-025-68035151



**Note:**

For research use only, not for use in diagnostic procedure.

Flow cytometric analysis of Hela cells with GLUT1 antibody at 1/50 dilution (blue) compared with an unlabelled control (cells without incubation with primary antibody; red). Alexa Fluor 488-conjugated goat anti rabbit IgG was used as the secondary antibody.

**Bioworld Technology, Inc.**

Add: 1660 South Highway 100, Suite 500 St. Louis Park, MN 55416, USA.

Email: [info@bioworld.com](mailto:info@bioworld.com)

Tel: 6123263284

Fax: 6122933841

**Bioworld technology, co. Ltd.**

Add: No 9, weidi road Qixia District Nanjing, 210046, P. R. China.

Email: [info@biogot.com](mailto:info@biogot.com)

Tel: 0086-025-68037686

Fax: 0086-025-68035151