

ZO1 Rabbit monoclonal antibody

Catalog: BS9802M

Host: Rabbit

Reactivity: Human, Mouse, Rat

BackGround:

Tight junction protein ZO-1 is a protein that in humans is encoded by the TJPI gene. This gene encodes a protein located on a cytoplasmic membrane surface of intercellular tight junctions. The N-terminal may be involved in transducing a signal required for tight junction assembly, while the C-terminal may have specific properties of tight junctions. The alpha domain might be involved in stabilizing junctions. ZO1 plays a role in the regulation of cell migration by targeting CDC42BPB to the leading edge of migrating cells.

Product:

Rabbit IgG, 1mg/ml in PBS with 0.02% sodium azide, 50% glycerol, pH7.2

Molecular Weight:

~ 194 kDa

Swiss-Prot:

Q07157

Purification&Purity:

Peptide affinity purified

Applications:

ICC: 1:200

IHC: 1:200

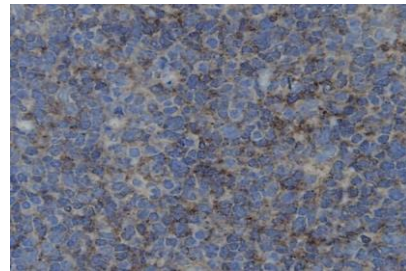
Storage&Stability:

Store at 4 °C short term. Aliquot and store at -20 °C long term. Avoid freeze-thaw cycles.

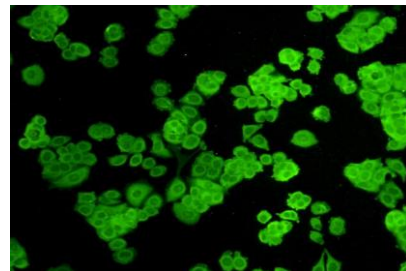
Specificity:

This antibody detects endogenous levels of ZO1 and does not cross-react with related proteins.

DATA:



Immunohistochemical analysis of paraffin-embedded human tonsil tissue using anti-ZO1 antibody. Counter stained with hematoxylin.



ICC staining ZO1 in MCF-7 cells (green). Cells were fixed in paraformaldehyde, permeabilised with 0.25% Triton *100/PBS.

Note:

For research use only, not for use in diagnostic procedure.

Bioworld Technology, Inc.

Add: 1660 South Highway 100, Suite 500 St. Louis Park, MN 55416, USA.

Email: info@bioworld.com

Tel: 6123263284

Fax: 6122933841

Bioworld technology, co. Ltd.

Add: No 9, weidi road Qixia District Nanjing, 210046, P. R. China.

Email: info@biogot.com

Tel: 0086-025-68037686

Fax: 0086-025-68035151