

ERI1 (D298) polyclonal antibody

Catalog: BS9202

Host: Rabbit

Reactivity: Human, Mouse, Rat

BackGround:

Helicase with RNase motif, more commonly designated Dicer, cleaves doublestranded RNA (dsRNA) in the RNA interference and small temporal RNA (stRNA) pathways, producing active small RNA components (siRNAs) which target the destruction of RNA and repress gene expression. Human Dicer cleaves dsRNA independent of ATP. The 3'-5' exonuclease ERI-1, also known as Protein 3'hExo, degrades Histone mRNA after replication and may be involved in the regulation of RNA interference. ERI-1 has a high affinity for the stem-loop structure of replication-dependent Histone pre-mRNAs. It requires the 5'-ACCCA-3' sequence present in stem-loop structure. ERI-1 and a stemloop binding protein (SLBP) target opposite faces of a unique highly conserved stem-loop RNA scaffold towards the 3' end of Histone mRNA.

Product:

Rabbit IgG, 1mg/ml in PBS with 0.02% sodium azide, 50% glycerol, pH7.2

Molecular Weight:

~ 42 kDa

Swiss-Prot:

Q8IV48

Purification&Purity:

The antibody was affinity-purified from rabbit antiserum by affinity-chromatography using epitope-specific im-

munogen and the purity is > 95% (by SDS-PAGE).

Applications:

WB: 1:500~1:1000

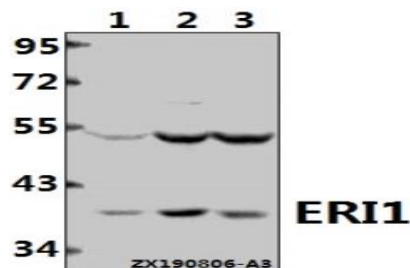
Storage&Stability:

Store at 4 °C short term. Aliquot and store at -20 °C long term. Avoid freeze-thaw cycles.

Specificity:

ERI1 (D298) polyclonal antibody detects endogenous levels of ERI1 protein.

DATA:



Western blot (WB) analysis of ERI1 pAb at 1:500 dilution

Lane1:SGC7901 whole cell lysate(40ug)

Lane2:A549 whole cell lysate(40ug)

Lane3:U-87MG whole cell lysate(40ug)

Note:

For research use only, not for use in diagnostic procedure.

Bioworld Technology, Inc.

Add: 1660 South Highway 100, Suite 500 St. Louis Park, MN 55416, USA.

Email: info@bioworld.com

Tel: 6123263284

Fax: 6122933841

Bioworld technology, co. Ltd.

Add: No 9, weidi road Qixia District Nanjing, 210046, P. R. China.

Email: info@biogot.com

Tel: 0086-025-68037686

Fax: 0086-025-68035151