

## WT1 polyclonal antibody

Catalog: BS91456

Host: Rabbit

Reactivity: Human, Mouse, Rat

### BackGround:

Wilms' tumor (WT) is an embryonal malignancy of the kidney that affects 1 in 10,000 infants and, like retinoblastoma, is observed in both sporadic and inherited forms. The Wilms' tumor locus has been mapped at chromosome 11p13 as a tumor suppressor gene which encodes a DNA binding protein with four zinc fingers and a glutamine-proline rich amino-terminus. The Wilms' tumor protein (WT1) binds the DNA sequence GCGGGGGCG, a recognition element common to the early growth response (Egr) family of Zn<sup>2+</sup> finger transcriptional activators. However, in contrast to Egr transcription factors, WT1 behaves as a transcriptional repressor in transient transfection assays with synthetic promoter constructs.

### Product:

0.01M TBS(pH7.4) with 1% BSA, 0.03% Proclin300 and 50% Glycerol.

### Molecular Weight:

~ 48 kDa

### Swiss-Prot:

P19544

### Purification&Purity:

The antibody was affinity-purified from rabbit antiserum by affinity-chromatography using epitope-specific immunogen and the purity is > 95% (by SDS-PAGE).

### Applications:

WB: 1:500~1:2000

IHC: 1:100~1:500

IF: 1:100~1:500

ELISA: 1:5000~1:10000

### Storage&Stability:

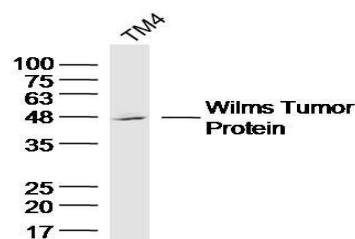
Store at 4 °C short term. Aliquot and store at -20 °C long term. Avoid freeze-thaw cycles.

### Specificity:

WT1 polyclonal antibody detects endogenous levels of

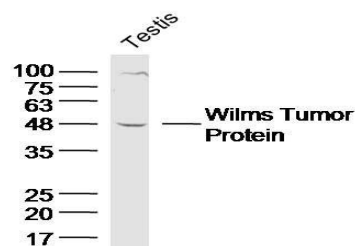
WT1 protein.

### DATA:



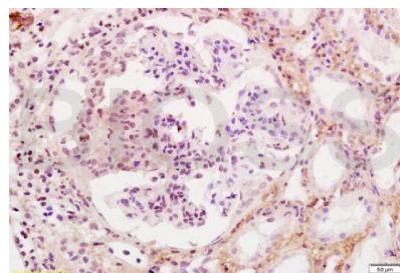
Sample: TM4 Cell (Mouse) Lysate at 40 ug

Primary: Anti-WT1 at 1/300 dilution



Sample: Testis (Mouse) Lysate at 40 ug

Primary: Anti-WT1 at 1/300 dilution



Tissue/cell: human kidney tissue; 4% Paraformaldehyde-fixed and paraffin-embedded;

Antigen retrieval: citrate buffer (0.01M, pH 6.0), Boiling bathing for 15min; Block endogenous peroxidase by 3% Hydrogen peroxide for 30min; Blocking buffer (normal goat serum) at 37 °C for 20 min;

Incubation: Anti-WT1 Polyclonal Antibody, Unconjugated 1:200, overnight at 4 °C

### Bioworld Technology, Inc.

Add: 1660 South Highway 100, Suite 500 St. Louis Park, MN 55416, USA.

Email: [info@bioworld.com](mailto:info@bioworld.com)

Tel: 6123263284

Fax: 6122933841

### Bioworld technology, co. Ltd.

Add: No 9, weidi road Qixia District Nanjing, 210046, P. R. China.

Email: [info@biogot.com](mailto:info@biogot.com)

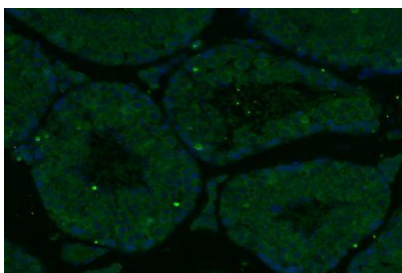
Tel: 0086-025-68037686

Fax: 0086-025-68035151



## PRODUCT DATA SHEET

Bioworld Technology, Inc.



Paraformaldehyde-fixed, paraffin embedded (Mouse testis); Antigen retrieval by boiling in sodium citrate buffer (pH6.0) for 15min; Block endogenous peroxidase by 3% hydrogen peroxide for 20 minutes; Blocking buffer (normal goat serum) at 37 °C for 30min; Antibody incubation with (WT1) Polyclonal Antibody, Unconjugated at 1:400 overnight at

4 °C.

### Note:

For research use only, not for use in diagnostic procedure.

---

### Bioworld Technology, Inc.

Add: 1660 South Highway 100, Suite 500 St. Louis Park,  
MN 55416, USA.

Email: [info@bioworld.com](mailto:info@bioworld.com)

Tel: 6123263284

Fax: 6122933841

### Bioworld technology, co. Ltd.

Add: No 9, weidi road Qixia District Nanjing, 210046,  
P. R. China.

Email: [info@biogot.com](mailto:info@biogot.com)

Tel: 0086-025-68037686

Fax: 0086-025-68035151