

## Tyk2 polyclonal antibody

Catalog: BS91391

Host: Rabbit

Reactivity: Human, Rat

### BackGround:

TYK2 belongs to the family of non-receptor janus tyrosine kinases, which regulate a spectrum of cellular functions occurring downstream of activated cytokine receptors in the lympho-hematopoietic system. Immunological stimuli, such as interferons and cytokines, recruit STAT transcription factors to the cytokine receptor where TYK2 is associated. TYK2 then phosphorylates proximal STAT factors, which subsequently dimerize, translocate to the nucleus, and bind to cis elements upstream of target gene promoters to regulating transcription. The canonical JAK-STAT pathway is integral to maintaining a normal immune system by stimulating proliferation, differentiation, survival, and host resistance to pathogens. Cytokine induced pro-inflammatory responses are attractive targets for anti-inflammatory therapies, specifically at the level of Jak-STAT signaling.

### Product:

Rabbit IgG, 1mg/ml in PBS with 0.02% sodium azide, 50% glycerol, pH7.2

### Molecular Weight:

~ 150 kDa

### Swiss-Prot:

P29597

### Purification&Purity:

Protein affinity purified.

### Applications:

WB:1:500-1:1000

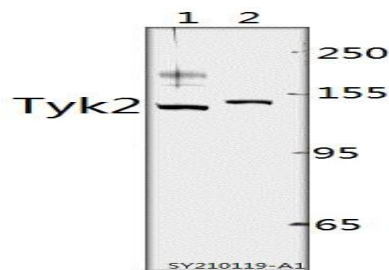
### Storage&Stability:

Store at +4 °C after thawing. Aliquot store at -20 °C. Avoid repeated freeze / thaw cycles.

### Specificity:

Tyk2 polyclonal antibody detects endogenous levels of Tyk2 protein.

### DATA:



Western blot (WB) analysis of Tyk2 pAb at 1:500 dilution

Lane1:MCF-7 whole cell lysate(40ug)

Lane2:The kidney tissue lysate of Rat(40ug)

### Note:

For research use only, not for use in diagnostic procedure.

### Bioworld Technology, Inc.

Add: 1660 South Highway 100, Suite 500 St. Louis Park, MN 55416, USA.

Email: [info@bioworld.com](mailto:info@bioworld.com)

Tel: 6123263284

Fax: 6122933841

### Bioworld technology, co. Ltd.

Add: No 9, weidi road Qixia District Nanjing, 210046, P. R. China.

Email: [info@biogot.com](mailto:info@biogot.com)

Tel: 0086-025-68037686

Fax: 0086-025-68035151