

TMEM248 polyclonal antibody

Catalog: BS91358

Host: Rabbit

Reactivity: Human, Mouse, Rat

BackGround:

This gene is thought to be involved in apoptosis, and may also be involved in hematopoietic development and differentiation. The use of alternative splice sites and promoters result in multiple transcript variants encoding different isoforms. Promotes osteoblast cell differentiation and terminal mineralization. Plays a role in inducing the cell cycle arrest via inhibiting CCND1 expression in all-trans-retinoic acid (ATRA) signal pathway.

Product:

Rabbit IgG, 1mg/ml in PBS with 0.02% sodium azide, 50% glycerol, pH7.2

Molecular Weight:

35/22 kDa (Predicted band size)

Swiss-Prot:

Q9NWD8(Human) Q3TBN1(Mouse) Q6AY76(Rat)

Purification&Purity:

Peptide affinity purified.

Applications:

WB:1:500-1,000

ICC:1:50-1:200

FC:1:50-1:100

Storage&Stability:

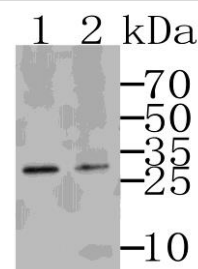
Store at +4 °C after thawing. Aliquot store at -20 °C. Avoid repeated freeze / thaw cycles.

Specificity:

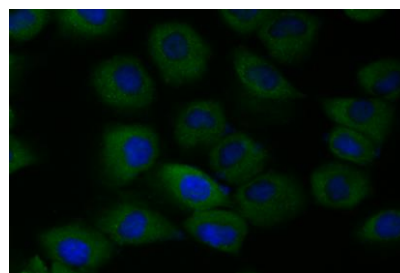
TMEM248 polyclonal antibody detects endogenous lev-

els of TMEM248 protein.

DATA:



Western blot analysis of Tmem248 on SkBr3 (1) and K562 cells lysates using anti-Tmem248 antibody.



ICC staining Tmem248 in HUVEC cells (green). The nuclear counter stain is DAPI (blue). Cells were fixed in paraformaldehyde, permeabilised with 0.25% Triton X100/PBS.

Note:

For research use only, not for use in diagnostic procedure.

Bioworld Technology, Inc.

Add: 1660 South Highway 100, Suite 500 St. Louis Park, MN 55416, USA.

Email: info@bioworld.com

Tel: 6123263284

Fax: 6122933841

Bioworld technology, co. Ltd.

Add: No 9, weidi road Qixia District Nanjing, 210046, P. R. China.

Email: info@biogot.com

Tel: 0086-025-68037686

Fax: 0086-025-68035151