

TfR2 polyclonal antibody

Catalog: BS91334

Host: Rabbit

Reactivity: Human

BackGround:

Iron is a vital molecule for living organisms because it is involved in a wide variety of metabolic processes, such as oxygen transport, DNA synthesis and electron transport. Excessive iron uptake leads to tissue damage as a result of formation of free radicals. Iron uptake and storage is tightly regulated by the feedback system of iron responsive element-containing gene products and iron regulatory proteins that modulate the expression levels of the genes involved in iron metabolism. The transferrin receptor 2 (TFR2) mediates the uptake of transferrin-bound iron. It is involved in iron metabolism, hepatocyte function and erythrocyte differentiation, and is highly expressed as a protein in liver as well as in hepatocytes and erythroid precursors. The gene encoding human TRF2 maps to chromosome 7q22 and is expressed as an a isoform, which encodes a transmembrane protein, and a b isoform, which encodes a shorter, intracellular protein. Mutations in the TFR2 gene result in hereditary hemochromatosis type III (HFE3), an iron overloading disorder that results in clinical complications, including cirrhosis, cardiopathy, diabetes, endocrine dysfunctions, arthropathy and susceptibility to liver cancer.

Product:

Rabbit IgG, 1mg/ml in PBS with 0.02% sodium azide, 50% glycerol, pH7.2

Molecular Weight:

89 kDa

Swiss-Prot:

Q9UP52(Human)

Purification&Purity:

ProA affinity purified

Applications:

WB:1:500-1:2,000

IHC:1:50-1:200

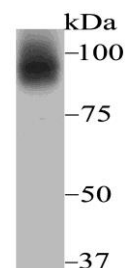
Storage&Stability:

Store at +4 °C after thawing. Aliquot store at -20 °C. Avoid repeated freeze / thaw cycles.

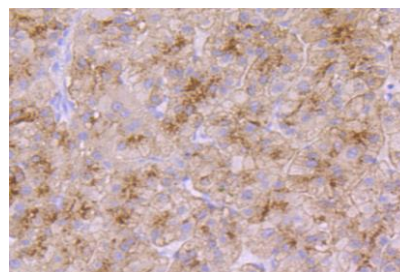
Specificity:

TfR2 polyclonal antibody detects endogenous levels of TfR2 protein.

DATA:



Western blot analysis of Transferrin Receptor 2 on HepG2 cell using anti-Transferrin Receptor 2 antibody at 1/1,000 dilution.



Immunohistochemical analysis of paraffin-embedded human liver tissue using anti-Transferrin Receptor 2 antibody. Counter stained with hematoxylin.

Note:

For research use only, not for use in diagnostic procedure.

Bioworld Technology, Inc.

Add: 1660 South Highway 100, Suite 500 St. Louis Park, MN 55416, USA.

Email: info@bioworld.com

Tel: 6123263284

Fax: 6122933841

Bioworld technology, co. Ltd.

Add: No 9, weidi road Qixia District Nanjing, 210046, P. R. China.

Email: info@biogot.com

Tel: 0086-025-68037686

Fax: 0086-025-68035151