

TFF1 polyclonal antibody

Catalog: BS91331

Host: Rabbit

Reactivity: Human

BackGround:

Trefoil peptides are protease resistant molecules secreted throughout the gut that play a role in mucosal healing. These peptides contain three intrachain disulfide bonds, forming the trefoil motif, or P-domain. pS2, also designated Md2, BCEI, TFF1 and pNR-2, is a trefoil protein that is highly expressed in normal gastric mucosa. pS2 has also been detected in a number of carcinomas including cancers of the breast, pancreas and stomach. pS2 is not present in normal breast tissue but is inducible by estrogen in MCF7 cells. pS2 is known to form dimers and this dimerization is thought to play a role in its protective and healing properties. The gene encoding pS2 maps to human chromosome 21q22.3.

Product:

Rabbit IgG, 1mg/ml in PBS with 0.02% sodium azide, 50% glycerol, pH7.2

Molecular Weight:

Swiss-Prot:

P04155(Human)

Purification&Purity:

ProA affinity purified

Applications:

WB:1:500

ICC/IF:1:50-1:200

IHC:1:50-1:200

FC:1:50-1:100

IP:1:10-1:50

Storage&Stability:

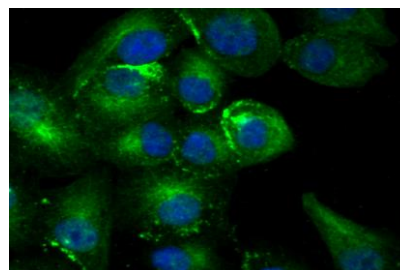
Store at +4 °C after thawing. Aliquot store at -20 °C or

-80 °C. Avoid repeated freeze / thaw cycles.

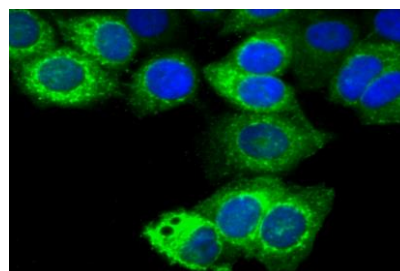
Specificity:

TFF1 polyclonal antibody detects endogenous levels of TFF1 protein.

DATA:



ICC staining Estrogen Inducible Protein pS2 in A549 cells (green). The nuclear counter stain is DAPI (blue). Cells were fixed in paraformaldehyde, permeabilised with 0.25% Triton X100/PBS.



ICC staining Estrogen Inducible Protein pS2 in MCF-7 cells (green). The nuclear counter stain is DAPI (blue). Cells were fixed in paraformaldehyde, permeabilised with 0.25% Triton X100/PBS.

Note:

For research use only, not for use in diagnostic procedure.

Bioworld Technology, Inc.

Add: 1660 South Highway 100, Suite 500 St. Louis Park, MN 55416, USA.

Email: info@bioworld.com

Tel: 6123263284

Fax: 6122933841

Bioworld technology, co. Ltd.

Add: No 9, weidi road Qixia District Nanjing, 210046, P. R. China.

Email: info@biogot.com

Tel: 0086-025-68037686

Fax: 0086-025-68035151