

TBR1 polyclonal antibody

Catalog: BS91321

Host: Rabbit

Reactivity: Human, Mouse, Rat

BackGround:

A novel murine and human gene, TBR-1, encodes a putative transcription factor related to the Brachyury (T) gene that is expressed only in postmitotic cells. T-brain-1 (TBR-1) mRNA is largely restricted to the cerebral cortex, where, during embryogenesis, it defines different regions that give rise to the paleocortex, limbic cortex and neocortex. TBR-1, Pax-6 and Emx-1 are expressed in the mouse and chicken pallium. The pallio-subpallial boundary lies at the interface between the TBR-1 and Dlx-2 expression domains. Chicken genes homologous to these mouse genes are expressed in topologically comparable patterns during development, suggesting that mouse and chicken may have similar histogenetic specification processes and field homologies. CASK/LIN-2, a membrane-associated guanylate kinase, is required for EGFR localization and signaling. In adult rat brain, CASK is concentrated at neuronal synapses and binds to the cell-surface proteins. CASK can interact with TBR-1, which is involved in forebrain development. CASK enters into the nucleus and binds to a specific DNA sequence (the T-element) in a complex with TBR-1. Thus, CASK acts as a coactivator of TBR-1 to induce transcription of T-element containing genes, including reelin.

Product:

Rabbit IgG, 1mg/ml in PBS with 0.02% sodium azide, 50% glycerol, pH7.2

Molecular Weight:

74 kDa

Swiss-Prot:

Q16650(Human) Q64336(Mouse) EntrezGene:680427(Rat)

Purification&Purity:

ProA affinity purified

Applications:

WB:1:500-1:1,000

FC:1:50-1:100

IHC:1:50-1:200

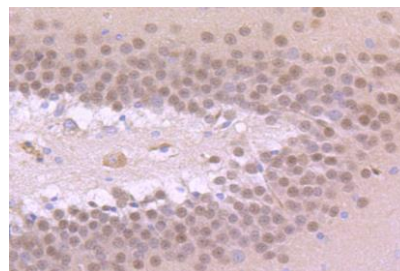
Storage&Stability:

Store at +4 °C after thawing. Aliquot store at -20 °C or -80 °C. Avoid repeated freeze / thaw cycles.

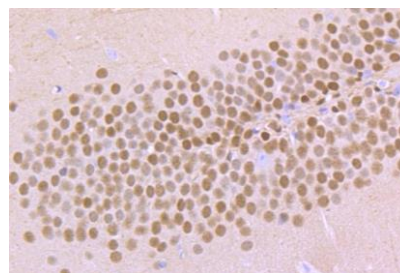
Specificity:

TBR1 polyclonal antibody detects endogenous levels of TBR1 protein.

DATA:



Immunohistochemical analysis of paraffin-embedded rat brain tissue using anti-TBR1 antibody. Counter stained with hematoxylin.



Immunohistochemical analysis of paraffin-embedded mouse brain tissue using anti-TBR1 antibody. Counter stained with hematoxylin.

Note:

For research use only, not for use in diagnostic procedure.

Bioworld Technology, Inc.

Add: 1660 South Highway 100, Suite 500 St. Louis Park, MN 55416, USA.

Email: info@bioworld.com

Tel: 6123263284

Fax: 6122933841

Bioworld technology, co. Ltd.

Add: No 9, weidi road Qixia District Nanjing, 210046, P. R. China.

Email: info@biogot.com

Tel: 0086-025-68037686

Fax: 0086-025-68035151