

SAE2/UBA2 polyclonal antibody

Catalog: BS91200

Host: Rabbit

Reactivity: Human

BackGround:

The small ubiquitin-related modifier protein SUMO-1 belongs to the ubiquitin-like protein family, which are synthesized as precursor proteins that undergo processing before conjugation to target proteins. However, SUMO and ubiquitin differ with respect to targeting. Ubiquitination predominantly targets proteins for degradation, whereas sumoylation targets proteins to a variety of cellular processes, including nuclear transport, transcriptional regulation, apoptosis, and protein stability. SUMO-1 utilizes homologues of the E1 and E2 enzymes for conjugation to proteins, which include I κ B α , MDM2, p53, PML, and RanGap1. AOS1 is homologous to the N-terminal half of E1 and UBA2 is homologous to the C-terminal half of E1. These proteins form a heterodimer that activates SUMO-1.

Product:

Rabbit IgG, 1mg/ml in PBS with 0.02% sodium azide, 50% glycerol, pH7.2

Molecular Weight:

~ 80 kDa

Swiss-Prot:

Q9UBT2(Human) Q9Z1F9(Mouse)

Purification&Purity:

ProA affinity purified

Applications:

WB: 1:500

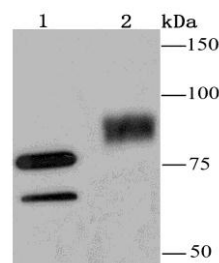
IP:1:10-1:50

Storage&Stability:

Store at +4 °C after thawing. Aliquot store at -20 °C or -80 °C. Avoid repeated freeze / thaw cycles.

Specificity:

SAE2/UBA2 polyclonal antibody detects endogenous levels of SAE2/UBA2 protein.

DATA:

Western blot (WB) analysis of GAB2 pAb at 1:500 dilution

Lane1:MCF-7 whole cell lysate(40ug)

Lane2:H1792 whole cell lysate(40ug)

Lane3:A549 whole cell lysate(40ug)

Note:

For research use only, not for use in diagnostic procedure.

Bioworld Technology, Inc.

Add: 1660 South Highway 100, Suite 500 St. Louis Park, MN 55416, USA.

Email: info@bioworld.com

Tel: 6123263284

Fax: 6122933841

Bioworld technology, co. Ltd.

Add: No 9, weidi road Qixia District Nanjing, 210046, P. R. China.

Email: info@biogol.com

Tel: 0086-025-68037686

Fax: 0086-025-68035151