

S100β polyclonal antibody

Catalog: BS91198

Host: Rabbit

Reactivity: Human, Mouse, Rat, Goat, zebrafish

BackGround:

The family of EF-hand type Ca^{2+} -binding proteins includes calbindin (previously designated vitamin D-dependent Ca^{2+} -binding protein), S-100 α and β , calgranulins A (also designated MRP8), B (also designated MRP14) and C (S-100 like proteins), and the parvalbumin family members, including parvalbumin α and parvalbumin β (also designated oncomodulin). The S-100 protein is involved in the regulation of cellular processes such as cell cycle progression and differentiation. Research also indicates that the S-100 protein may function in the activation of Ca^{2+} induced Ca^{2+} release, inhibition of microtubule assembly and inhibition of protein kinase C mediated phosphorylation. Two S-100 subunits, sharing 60% sequence identity, have been described as S-100 α chain and S-100 β chain. Three S-100 dimeric forms have been characterized, differing in their subunit composition of either two α chains, two β chains or one α and one β chain. S-100 localizes to the cytoplasm and nuclei of astrocytes, Schwann's cells, ependymomas and astroglomas. S-100 is also detected in almost all benign naevi, malignant melanocytic tumours and in Langerhans cells in the skin. Calbindin, S-100 proteins and parvalbumin proteins are each expressed in neural tissues. In addition, S-100 α and β are present in a variety of other tissues, and calbindin is present in intestine and kidney.

Product:

Rabbit IgG, 1mg/ml in PBS with 0.02% sodium azide, 50% glycerol, pH7.2

Molecular Weight:

~ 11 kDa

Swiss-Prot:

P04271

Purification&Purity:

The antibody was affinity-purified from rabbit antiserum by affinity-chromatography using epitope-specific immunogen and the purity is > 95% (by SDS-PAGE).

Applications:

WB:1:500-1:2000

IF:1:50-1:200

IHC:1:50-1:200

IP:1:50-1:200

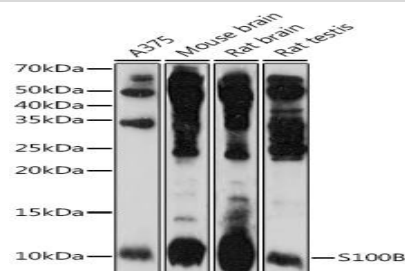
Storage&Stability:

Store at +4 °C after thawing. Aliquot store at -20 °C or -80 °C. Avoid repeated freeze / thaw cycles.

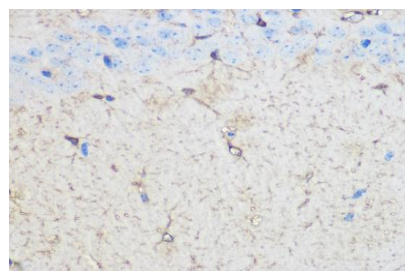
Specificity:

S100β polyclonal antibody detects endogenous levels of S100β protein.

DATA:



Western blot analysis of extracts of various cell lines, using S100β pAb at 1:1000 dilution.



Immunohistochemistry of paraffin-embedded Mouse brain using S100β pAb at dilution of 1:100 (40x lens).

Bioworld Technology, Inc.

Add: 1660 South Highway 100, Suite 500 St. Louis Park, MN 55416, USA.

Email: info@bioworld.com

Tel: 6123263284

Fax: 6122933841

Bioworld technology, co. Ltd.

Add: No 9, weidi road Qixia District Nanjing, 210046, P. R. China.

Email: info@biogot.com

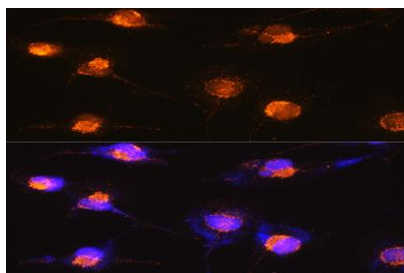
Tel: 0086-025-68037686

Fax: 0086-025-68035151



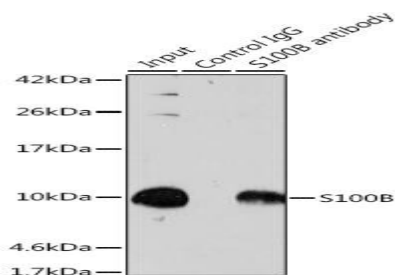
PRODUCT DATA SHEET

Bioworld Technology, Inc.



For research use only, not for use in diagnostic procedure.

Immunofluorescence analysis of U-251 MG cells using S100 β pAb at dilution of 1:100 (40x lens).



Immunoprecipitation analysis of 600ug extracts of Mouse brain cells using 3ug S100 β antibody. Western blot was performed from the immunoprecipitate using S100 β antibody at a dilution of 1:500.

Note:

Bioworld Technology, Inc.

Add: 1660 South Highway 100, Suite 500 St. Louis Park, MN 55416, USA.

Email: info@bioworld.com

Tel: 6123263284

Fax: 6122933841

Bioworld technology, co. Ltd.

Add: No 9, weidi road Qixia District Nanjing, 210046, P. R. China.

Email: info@biogot.com

Tel: 0086-025-68037686

Fax: 0086-025-68035151