

PSMA polyclonal antibody

Catalog: BS91124

Host: Rabbit

Reactivity: Human

BackGround:

Prostate cancer is the most frequently diagnosed cancer and the early detection of prostate cancer dramatically and efficiently reduces the observed mortality rate. Several proteins have been identified as specific markers of prostate cancer, and they may be useful as diagnostic indicators. PSA, prostate specific antigen, is the classical indicator for transformed prostate tissue; however, in addition to being upregulated in prostate cancer, PSA is also upregulated in non-malignant conditions, such as benign prostatic hyperplasia prostate. Conversely, STEAP (six-transmembrane epithelial antigen of the prostate), prostate carcinoma tumor antigen (PCTA-1) and prostate-specific membrane antigen (PSM) represent additional prostate-specific antigens that are overexpressed only in malignant tumors and therefore are more specific identifiers of malignancies. PSM is an integral membrane protein, and PCTA-1 is related to the galectin gene family, which mediate both cell-cell and cell-matrix interactions in a manner similar to the selectin subgroup of C-type lectins. STEAP is a serpentine transmembrane cell-surface tumor-antigen that is predicted to functions as a channel or transporter protein.

Product:

Rabbit IgG, 1mg/ml in PBS with 0.02% sodium azide, 50% glycerol, pH7.2

Molecular Weight:

50/85 kDa

Swiss-Prot:

Q04609(Human)

Purification&Purity:

Peptide affinity purified

Applications:

WB:1:500-1:1,000

ICC:1:50-1:200

FC:1:50-1:100

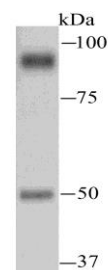
Storage&Stability:

Store at +4 °C after thawing. Aliquot store at -20 °C or -80 °C. Avoid repeated freeze / thaw cycles.

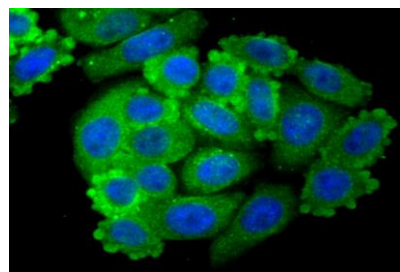
Specificity:

PSMA polyclonal antibody detects endogenous levels of PSMA protein.

DATA:



Western blot analysis of PSMA on human small intestine tissue lysate using anti-PSMA antibody at 1/1,000 dilution.



ICC staining PSMA in HepG2 cells (green). The nuclear counter stain is DAPI (blue). Cells were fixed in paraformaldehyde, permeabilised with 0.25% Triton X100/PBS.

Note:

For research use only, not for use in diagnostic procedure.

Bioworld Technology, Inc.

Add: 1660 South Highway 100, Suite 500 St. Louis Park, MN 55416, USA.

Email: info@bioworld.com

Tel: 6123263284

Fax: 6122933841

Bioworld technology, co. Ltd.

Add: No 9, weidi road Qixia District Nanjing, 210046, P. R. China.

Email: info@biogot.com

Tel: 0086-025-68037686

Fax: 0086-025-68035151