

## PSA polyclonal antibody

Catalog: BS91121

Host: Rabbit

Reactivity: Human

### BackGround:

Prostate specific antigen (PSA), also designated  $\gamma$ -seminoprotein, seminin, p30 antigen, semenogelase, and kallikrein 3 (KLK3), was first identified as a glycoprotein in human seminal plasma. PSA was determined by sequence similarity to be a member of the kallikrein subfamily of trypsin proteases. PSA is a serine protease that hydrolyzes the major human seminal protein, the seminal plasma mobility inhibitor precursor, or semenogelin I (SPMIP or SgI), which leads to semen liquification. PSA production and expression are highest in normal, benign hyperplastic and cancerous tissues of the prostate, although PSA has also been detected in accessory male sex glands and in breast cancer. PSA has been identified as an aid in the early detection of prostate cancer and is a commonly used tumor marker.

### Product:

Rabbit IgG, 1mg/ml in PBS with 0.02% sodium azide, 50% glycerol, pH7.2

### Molecular Weight:

34 kDa

### Swiss-Prot:

P07288(Human)

### Purification&Purity:

ProA affinity purified

### Applications:

WB:1:1,000

ICC:1:50-1:200

IHC:1:50-1:200

### Storage&Stability:

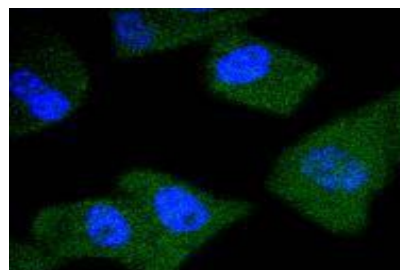
Store at +4 °C after thawing. Aliquot store at -20 °C or

-80 °C. Avoid repeated freeze / thaw cycles.

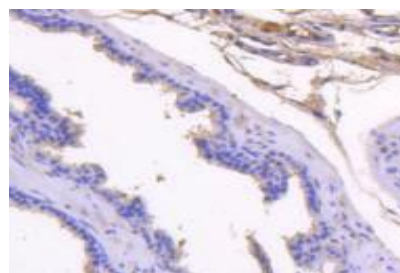
### Specificity:

PSA polyclonal antibody detects endogenous levels of PSA protein.

### DATA:



ICC staining PSA in PC-3M cells (green). The nuclear counter stain is DAPI (blue). Cells were fixed in paraformaldehyde, permeabilised with 0.25% Triton X100/PBS.



Immunohistochemical analysis of paraffin-embedded mouse prostate tissue using anti-PSA antibody. Counter stained with hematoxylin.

### Note:

For research use only, not for use in diagnostic procedure.

### Bioworld Technology, Inc.

Add: 1660 South Highway 100, Suite 500 St. Louis Park, MN 55416, USA.

Email: [info@bioworld.com](mailto:info@bioworld.com)

Tel: 6123263284

Fax: 6122933841

### Bioworld technology, co. Ltd.

Add: No 9, weidi road Qixia District Nanjing, 210046, P. R. China.

Email: [info@biogot.com](mailto:info@biogot.com)

Tel: 0086-025-68037686

Fax: 0086-025-68035151