

PINK1 polyclonal antibody

Catalog: BS91075

Host: Rabbit

Reactivity: Human, Mouse

BackGround:

A member of the serine / threonine protein kinase family, PTEN induced putative kinase 1 (PINK1) is a tumor suppressor. PINK1 is primarily located in mitochondria, and is ubiquitously expressed in testis, skeletal muscle, and heart tissue. at lower levels in pancreas, ovary, brain, placenta, kidney, liver, prostate and small intestine. During cellular stress PINK1 protects against mitochondrial dysfunction by inducing phosphorylation mitochondrial proteins. PINK1 mutations may give rise to different autophosphorylation activity. Mutations in the PINK1 gene (PARK6) are associated with early onset Parkinson's disease, a recessive neurodegenerative disorder characterized by resting tremor, muscular rigidity, bradykinesia and postural instability. Parkinson's disease generally involves the presence of intraneuronal accumulations of aggregated proteins (Lewy bodies) in brain neurons.

Product:

Rabbit IgG, 1mg/ml in PBS with 0.02% sodium azide, 50% glycerol, pH7.2

Molecular Weight:

63 kDa

Swiss-Prot:

Q9BXM7(Human) Q99MQ3(Mouse)

Purification&Purity:

Protein affinity purified

Applications:

WB:1:500-1:1,000

ICC:1:50-1:200

IHC:1:100-1:200

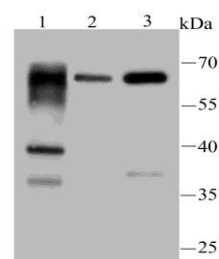
Storage&Stability:

Store at +4 °C after thawing. Aliquot store at -20 °C or -80 °C. Avoid repeated freeze / thaw cycles.

Specificity:

PINK1 polyclonal antibody detects endogenous levels of PINK1 protein.

DATA:



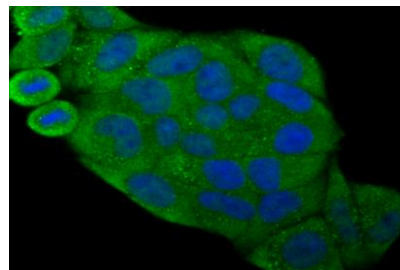
Western blot analysis of PINK1 on different lysates using anti-PINK1 antibody at 1/200 dilution.

Positive control:

Lane1: A431

Lane2: Mouse testis tissue

Lane3: Jurkat



ICC staining PINK1 in HeLa cells (green). The nuclear counter stain is DAPI (blue). Cells were fixed in paraformaldehyde, permeabilised with 0.25% Triton X100/PBS.

Note:

For research use only, not for use in diagnostic procedure.

Bioworld Technology, Inc.

Add: 1660 South Highway 100, Suite 500 St. Louis Park, MN 55416, USA.

Email: info@bioworld.com

Tel: 6123263284

Fax: 6122933841

Bioworld technology, co. Ltd.

Add: No 9, weidi road Qixia District Nanjing, 210046, P. R. China.

Email: info@biogot.com

Tel: 0086-025-68037686

Fax: 0086-025-68035151