

METTL26 polyclonal antibody

Catalog: BS90849

Host: Rabbit

Reactivity: Human

BackGround:

Also named Chromosome 16 open reading frame 13, also called C16orf13, is a protein-coding gene of unknown function, also known as JFP2. Though the function of this gene is unknown, various data have revealed that it is expressed at high levels in various cancerous tissues. Underexpression of this gene has also been linked to disease consequences in humans.

Product:

Rabbit IgG, 1mg/ml in PBS with 0.02% sodium azide, 50% glycerol, pH7.2

Molecular Weight:

~ 22 kDa

Swiss-Prot:

Q96S19

Purification&Purity:

The antibody was affinity-purified from rabbit antiserum by affinity-chromatography using epitope-specific immunogen and the purity is > 95% (by SDS-PAGE).

Applications:

WB:1:500-1:1000

IHC:1:50-1:200

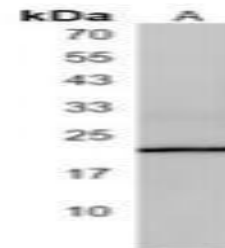
Storage&Stability:

Store at 4 °C short term. Aliquot and store at -20 °C long term. Avoid freeze-thaw cycles.

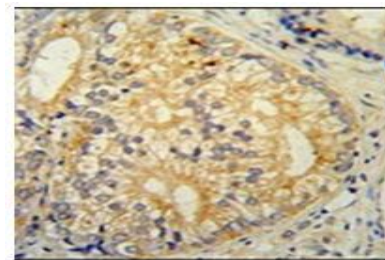
Specificity:

METTL26 polyclonal antibody detects endogenous levels of METTL26 protein.

DATA:



Western blot analysis of METTL26 expression in CHO (A) whole cell lysates.



Immunohistochemical analysis of METTL26 staining in human prostate carcinoma formalin fixed paraffin embedded tissue section.

Note:

For research use only, not for use in diagnostic procedure.

Bioworld Technology, Inc.

Add: 1660 South Highway 100, Suite 500 St. Louis Park, MN 55416, USA.

Email: info@bioworld.com

Tel: 6123263284

Fax: 6122933841

Bioworld technology, co. Ltd.

Add: No 9, weidi road Qixia District Nanjing, 210046, P. R. China.

Email: info@biogot.com

Tel: 0086-025-68037686

Fax: 0086-025-68035151