

Mesothelin polyclonal antibody

Catalog: BS90847

Host: Rabbit

Reactivity: Human

BackGround:

This gene encodes a preproprotein that is proteolytically processed to generate two protein products, megakaryocyte potentiating factor and mesothelin. Mesothelin is a glycosylphosphatidylinositol-anchored cell-surface protein that may function as a cell adhesion protein. Alternative splicing results in multiple transcript variants, at least one of which encodes an isoform that is proteolytically processed. Mesothelin is over expressed in several human tumors, including mesothelioma, ovarian cancer, pancreatic adenocarcinoma and cholangiocarcinoma. The interaction between mesothelin and MUC16 (also known as CA125) may facilitate the implantation and peritoneal spread of tumors by cell adhesion. Dr. Mitchell Ho and colleagues at the National Cancer Institute identified the region (residues 296-359) consisting of 64 amino acids at the N-terminus of cell surface mesothelin as the functional binding domain for MUC16.

Product:

Rabbit IgG, 1mg/ml in PBS with 0.02% sodium azide, 50% glycerol, pH7.2

Molecular Weight:

45 kDa, cleavage form

Swiss-Prot:

Q13421 Human

Purification&Purity:

Protein affinity purified.

Applications:

WB:1:500-1:2,000

ICC:1:50

IHC:1:50-1:200

Storage&Stability:

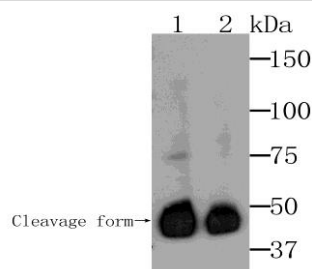
Store at +4 °C after thawing. Aliquot store at -20 °C. Avoid repeated freeze / thaw cycles.

Specificity:

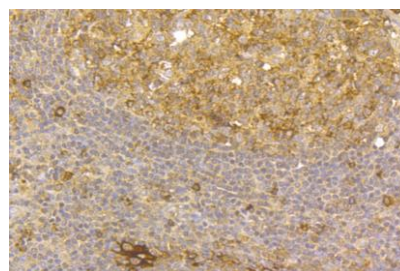
Mesothelin polyclonal antibody detects endogenous lev-

els of Mesothelin protein.

DATA:



Western blot analysis of Mesothelin on different lysates. Proteins were transferred to a PVDF membrane and blocked with 5% BSA in PBS for 1 hour at room temperature. The primary antibody was used at a 1:500 dilution in 5% BSA at room temperature for 2 hours. Goat Anti-Rabbit IgG - HRP Secondary Antibody (HA1001) at 1:5,000 dilution was used for 1 hour at room temperature. Positive control: Lane 1: SiHa cell lysate Lane 2: Hela cell lysate



Immunohistochemical analysis of paraffin-embedded human tonsil tissue using anti-Mesothelin antibody. The section was pre-treated using heat mediated antigen retrieval with Tris-EDTA buffer (pH 8.0-8.4) for 20 minutes. The tissues were blocked in 5% BSA for 30 minutes at room temperature, washed with ddH2O and PBS, and then probed with ER1803-76 at 1/100 dilution, for 30 minutes at room temperature and detected using an HRP conjugated compact polymer system. DAB was used as the chromogen. Counter stained with hematoxylin and mounted with DPX.

Note:

For research use only, not for use in diagnostic procedure.

Bioworld Technology, Inc.

Add: 1660 South Highway 100, Suite 500 St. Louis Park, MN 55416, USA.

Email: info@bioworld.com

Tel: 6123263284

Fax: 6122933841

Bioworld technology, co. Ltd.

Add: No 9, weidi road Qixia District Nanjing, 210046, P. R. China.

Email: info@biogot.com

Tel: 0086-025-68037686

Fax: 0086-025-68035151



PRODUCT DATA SHEET

Bioworld Technology, Inc.

Bioworld Technology, Inc.

Add: 1660 South Highway 100, Suite 500 St. Louis Park,
MN 55416, USA.

Email: info@bioworld.com

Tel: 6123263284

Fax: 6122933841

Bioworld technology, co. Ltd.

Add: No 9, weidi road Qixia District Nanjing, 210046,
P. R. China.

Email: info@biogot.com

Tel: 0086-025-68037686

Fax: 0086-025-68035151