

LSP1 polyclonal antibody

Catalog: BS90811

Host: Rabbit

Reactivity: Human, Mouse, Rat

BackGround:

May play a role in mediating neutrophil activation and chemotaxis (By similarity).

Product:

0.01M TBS(pH7.4) with 1% BSA, 0.03% Proclin300 and 50% Glycerol.

Molecular Weight:

~ 54 kDa

Swiss-Prot:

P33241

Purification&Purity:

The antibody was affinity-purified from rabbit antiserum by affinity-chromatography using epitope-specific immunogen and the purity is > 95% (by SDS-PAGE).

Applications:

WB: 1:500-1:2000

ELISA: 1:5000-1:10000

IHC: 1:100-1:500

IF: 1:100-1:500

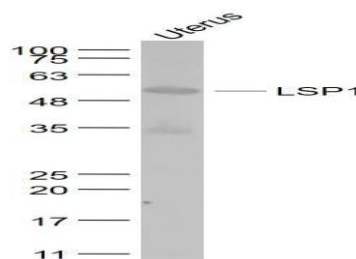
Storage&Stability:

Store at +4 °C after thawing. Aliquot store at -20 °C or -80 °C. Avoid repeated freeze / thaw cycles.

Specificity:

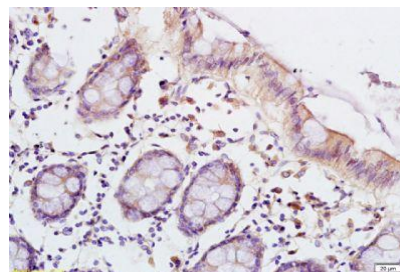
LSP1 polyclonal antibody detects endogenous levels of LSP1 protein.

DATA:



Uterus (Mouse) Lysate at 40 ug

Primary: Anti- LSP1 at 1/1000 dilution



Tissue/cell: human colon carcinoma; 4% Paraformaldehyde-fixed and paraffin-embedded;

Antigen retrieval: citrate buffer (0.01M, pH 6.0), Boiling bathing for 15min; Block endogenous peroxidase by 3% Hydrogen peroxide for 30min; Blocking buffer (normal goat serum) at 37 °C for 20 min;

Incubation: Anti-LSP1 Polyclonal Antibody, Unconjugated 1:200, overnight at 4 °C.

Note:

For research use only, not for use in diagnostic procedure.

Bioworld Technology, Inc.

Add: 1660 South Highway 100, Suite 500 St. Louis Park, MN 55416, USA.

Email: info@bioworld.com

Tel: 6123263284

Fax: 6122933841

Bioworld technology, co. Ltd.

Add: No 9, weidi road Qixia District Nanjing, 210046, P. R. China.

Email: info@biogot.com

Tel: 0086-025-68037686

Fax: 0086-025-68035151