

## KPNA2 polyclonal antibody

Catalog: BS90777

Host: Rabbit

Reactivity: Human, Mouse, Rat

### BackGround:

Functions in nuclear protein import as an adapter protein for nuclear receptor KPNB1. Binds specifically and directly to substrates containing either a simple or bipartite NLS motif. Docking of the importin/substrate complex to the nuclear pore complex (NPC) is mediated by KPNB1 through binding to nucleoporin FxFG repeats and the complex is subsequently translocated through the pore by an energy requiring, Ran-dependent mechanism. At the nucleoplasmic side of the NPC, Ran binds to importin-beta and the three components separate and importin-alpha and -beta are re-exported from the nucleus to the cytoplasm where GTP hydrolysis releases Ran from importin. The directionality of nuclear import is thought to be conferred by an asymmetric distribution of the GTP- and GDP-bound forms of Ran between the cytoplasm and nucleus.

### Product:

Rabbit IgG, 1mg/ml in PBS with 0.02% sodium azide, 50% glycerol, pH7.2

### Molecular Weight:

### Swiss-Prot:

P52292(Human) P52293(Mouse)

### Purification&Purity:

ProA affinity purified

### Applications:

WB:1:500-1:2,000

FC:1:50-1:100

### Storage&Stability:

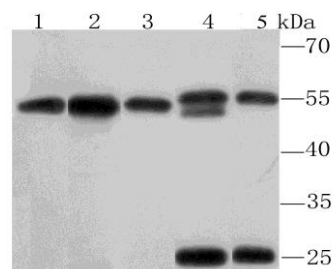
Store at +4 °C after thawing. Aliquot store at -20 °C or

-80 °C. Avoid repeated freeze / thaw cycles.

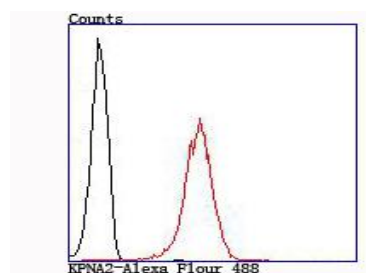
### Specificity:

KPNA2 polyclonal antibody detects endogenous levels of KPNA2 protein.

### DATA:



Western blot analysis of KPNA2 on different cell lysates using anti-KPNA2 antibody at 1/1,000 dilution. Postive control: Lane 1: Hela Lane 2: 293T Lane 3: HepG2 Lane 4: NIH-3T3 Lane 5: PC-12



Flow cytometric analysis of 293T cells with KPNA2 antibody at 1/100 dilution (red) compared with an unlabelled control (cells without incubation with primary antibody; black).

### Note:

For research use only, not for use in diagnostic procedure.

### Bioworld Technology, Inc.

Add: 1660 South Highway 100, Suite 500 St. Louis Park, MN 55416, USA.

Email: [info@bioworld.com](mailto:info@bioworld.com)

Tel: 6123263284

Fax: 6122933841

### Bioworld technology, co. Ltd.

Add: No 9, weidi road Qixia District Nanjing, 210046, P. R. China.

Email: [info@biogot.com](mailto:info@biogot.com)

Tel: 0086-025-68037686

Fax: 0086-025-68035151