

## KMT6/EZH2 polyclonal antibody

Catalog: BS90776

Host: Rabbit

Reactivity: Human

### BackGround:

In *Drosophila*, the Polycomb (PcG) gene family encodes chromatin proteins that are required for the repression of homeotic loci in embryonic development. PcG proteins work in conjunction with the trithorax-group (trxG), which activate homeobox gene expression during embryonic development. ENX-1, a mammalian homolog of the *Drosophila* gene enhancer of zeste, is a PcG protein that is ubiquitously expressed during early embryogenesis and becomes restricted to the central and peripheral nervous systems and sites of fetal hematopoiesis during later development. In the adult, ENX-1 is restricted to specific sites, including spleen, testis and placenta. The gene encoding human ENX-1 transcribes a 746 amino acid polypeptide which contains a trithorax-like domain and a DNA-binding motif. ENX-1 interacts with the proto-oncogene product Vav and is thought to be involved in the proliferation of normal and malignant hematopoietic cells. By altering the regulation of target genes, ENX-1 may also contribute to certain phenotypes of Down syndrome.

### Product:

Rabbit IgG, 1mg/ml in PBS with 0.02% sodium azide, 50% glycerol, pH7.2

### Molecular Weight:

86 kDa

### Swiss-Prot:

Q15910(Human)

### Purification&Purity:

ProA affinity purified

### Applications:

WB:1:1,000-1:2,000

ICC:1:50-1:200

IHC:1:50-1:200

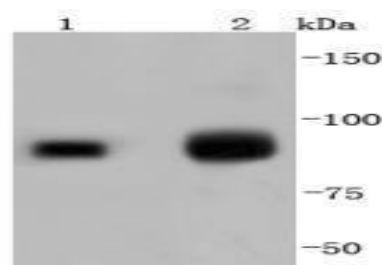
### Storage&Stability:

Store at +4 °C after thawing. Aliquot store at -20 °C or -80 °C. Avoid repeated freeze / thaw cycles.

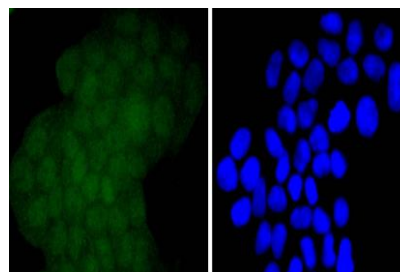
### Specificity:

KMT6/EZH2 polyclonal antibody detects endogenous levels of KMT6/EZH2 protein.

### DATA:



Western blot analysis of KMT6/EZH2 on different lysates using anti-KMT6/EZH2 antibody at 1/1,000 dilution. Positive control: Lane 1: 293T Lane 2: 293



ICC staining KMT6/EZH2 in HeLa cells (green). The nuclear counter stain is DAPI (blue). Cells were fixed in paraformaldehyde, permeabilized with 0.25% Triton X100/PBS.

### Note:

For research use only, not for use in diagnostic procedure.

### Bioworld Technology, Inc.

Add: 1660 South Highway 100, Suite 500 St. Louis Park, MN 55416, USA.

Email: [info@bioworld.com](mailto:info@bioworld.com)

Tel: 6123263284

Fax: 6122933841

### Bioworld technology, co. Ltd.

Add: No 9, weidi road Qixia District Nanjing, 210046, P. R. China.

Email: [info@biogol.com](mailto:info@biogol.com)

Tel: 0086-025-68037686

Fax: 0086-025-68035151