

KLF4 polyclonal antibody

Catalog: BS90773

Host: Rabbit

Reactivity: Human, Mouse, Rat

BackGround:

The Kruppel-type zinc finger transcription factors comprise a conserved family of DNA binding proteins that are important in developmental regulation. The Kruppel zinc finger transcription factor was initially identified in *Drosophila* as a segmentation gene. Kruppel-like factors that have been characterized in mammals include EKLF, LKLF and GKLF (6-8). EKLF is expressed principally in erythroid tissues, and LKLF expression is limited to the lung. GKLF is found predominantly in gut and has been shown to be expressed during growth arrest.

Product:

Rabbit IgG, 1mg/ml in PBS with 0.02% sodium azide, 50% glycerol, pH7.2

Molecular Weight:

55 kDa

Swiss-Prot:

O43474(Human) Q60793(Mouse) Unigene:7719(Rat)

Purification&Purity:

ProA affinity purified

Applications:

WB:1:1,000-1:5,000

ICC:1:50-1:200

IHC:1:50-1:200

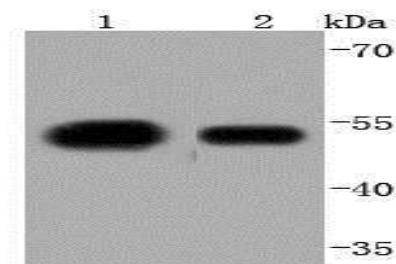
Storage&Stability:

Store at +4 °C after thawing. Aliquot store at -20 °C or -80 °C. Avoid repeated freeze / thaw cycles.

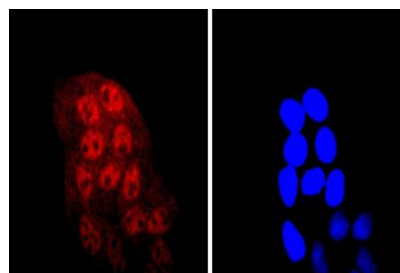
Specificity:

KLF4 polyclonal antibody detects endogenous levels of KLF4 protein.

DATA:



Western blot analysis of KLF4 on different lysates using anti-KLF4 antibody at 1/1,000 dilution. Positive control: Lane 1: 293 Lane 2: NCCIT



ICC staining KLF4 in HeLa cells (red). The nuclear counter stain is DAPI (blue). Cells were fixed in paraformaldehyde, permeabilised with 0.25% Triton X100/PBS.

Note:

For research use only, not for use in diagnostic procedure.

Bioworld Technology, Inc.

Add: 1660 South Highway 100, Suite 500 St. Louis Park, MN 55416, USA.

Email: info@bioworld.com

Tel: 6123263284

Fax: 6122933841

Bioworld technology, co. Ltd.

Add: No 9, weidi road Qixia District Nanjing, 210046, P. R. China.

Email: info@biogot.com

Tel: 0086-025-68037686

Fax: 0086-025-68035151