

GCLM polyclonal antibody

Catalog: BS90567

Host: Rabbit

Reactivity: Human, Mouse, Rat

BackGround:

Gamma-glutamylcysteine synthetase (γ -GCS) is the rate limiting enzyme for glutathione (L-gamma-glutamyl-L-cysteinylglycine, GSH) synthesis. GSH is ubiquitous in mammalian cells as a vital intra- and extracellular protective antioxidant. γ -GCS is a heterodimer of a heavy catalytic subunit and a light regulatory subunit that is responsive to inflammation, phenolic antioxidants, heat shock, oxidants and cytokines. The human gamma-GCS gene encoding the 367 amino acid catalytic subunit maps to chromosome 6p12. The human γ -GCS gene encoding the regulatory subunit maps to chromosome 1p22-p21. The two subunits of γ -GCS form a heterodimeric zinc metalloprotein that gains activity through formation of a reversible disulfide bond.

Product:

Rabbit IgG, 1mg/ml in PBS with 0.02% sodium azide, 50% glycerol, pH7.2

Molecular Weight:

Swiss-Prot:

P48507(Human) O09172(Mouse) P48508(Rat)

Purification&Purity:

ProA affinity purified

Applications:

WB:1:500-1:1,000

ICC:1:50-1:200

IHC:1:50-1:100

FC:1:50-1:100

Storage&Stability:

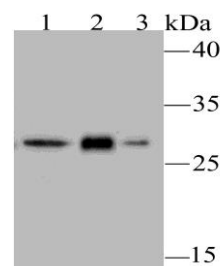
Store at +4 °C after thawing. Aliquot store at -20 °C or

-80 °C. Avoid repeated freeze / thaw cycles.

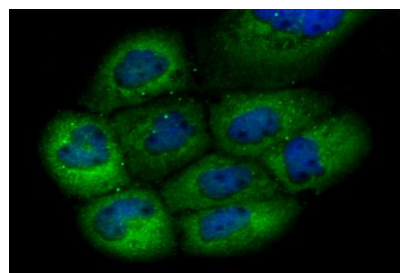
Specificity:

GCLM polyclonal antibody detects endogenous levels of GCLM protein.

DATA:



Western blot analysis of GCLM on different cell lysates using anti-GCLM antibody at 1/500 dilution. Positive control: Lane 1: A431
Lane 2: PC-12 Lane 3: NIH-3T3



ICC staining GCLM in A431 cells (green). The nuclear counter stain is DAPI (blue). Cells were fixed in paraformaldehyde, permeabilised with 0.25% Triton X100/PBS.

Note:

For research use only, not for use in diagnostic procedure.

Bioworld Technology, Inc.

Add: 1660 South Highway 100, Suite 500 St. Louis Park, MN 55416, USA.

Email: info@bioworld.com

Tel: 6123263284

Fax: 6122933841

Bioworld technology, co. Ltd.

Add: No 9, weidi road Qixia District Nanjing, 210046, P. R. China.

Email: info@biogot.com

Tel: 0086-025-68037686

Fax: 0086-025-68035151