

ENO1 polyclonal antibody

Catalog: BS90463

Host: Rabbit

Reactivity: Human, Mouse, Rat, Zebrafish

BackGround:

Multifunctional enzyme that, as well as its role in glycolysis, plays a part in various processes such as growth control, hypoxia tolerance and allergic responses. May also function in the intravascular and pericellular fibrinolytic system due to its ability to serve as a receptor and activator of plasminogen on the cell surface of several cell-types such as leukocytes and neurons. Stimulates immunoglobulin production. MBP1 binds to the myc promoter and acts as a transcriptional repressor. May be a tumor suppressor.

Product:

Rabbit IgG, 1mg/ml in PBS with 0.02% sodium azide, 50% glycerol, pH7.2

Molecular Weight:

47 kDa

Swiss-Prot:

P06733(Human) P17182(Mouse) P04764(Rat)

Purification&Purity:

ProA affinity purified

Applications:

WB:1:500-1:2,000

FC:1:50-1:100

ICC:1:10-1:50

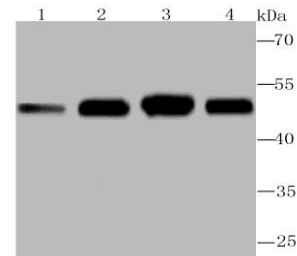
Storage&Stability:

Store at +4 °C after thawing. Aliquot store at -20 °C or -80 °C. Avoid repeated freeze / thaw cycles.

Specificity:

ENO1 polyclonal antibody detects endogenous levels of ENO1 protein.

DATA:



Western blot analysis of ENO1 on different lysates using anti-ENO1 antibody at 1/1,000 dilution.

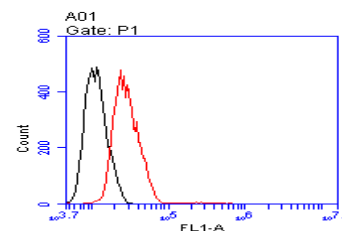
Positive control:

Lane 1: Rat brain tissue

Lane 2: NIH-3T3

Lane 3: Hela

Lane 4: HepG2



Flow cytometric analysis of MCF-7 cells with ENO1 antibody at 1/100 dilution (red) compared with an unlabelled control (cells without incubation with primary antibody; black).

Note:

For research use only, not for use in diagnostic procedure.

Bioworld Technology, Inc.

Add: 1660 South Highway 100, Suite 500 St. Louis Park, MN 55416, USA.

Email: info@bioworld.com

Tel: 6123263284

Fax: 6122933841

Bioworld technology, co. Ltd.

Add: No 9, weidi road Qixia District Nanjing, 210046, P. R. China.

Email: info@biogot.com

Tel: 0086-025-68037686

Fax: 0086-025-68035151