

Desmin polyclonal antibody

Catalog: BS90406

Host: Rabbit

Reactivity: Human, mouse, zebrafish

BackGround:

Desmin is one of the earliest protein markers for muscle tissue in embryogenesis as it is detected in the somites. Although it is present early in the development of muscle cells, it is only expressed at low levels, and increases as the cell nears terminal differentiation. Desmin is also important in muscle cell architecture and structure since it connects many components of the cytoplasm. Finally, desmin may be important in mitochondria function. Desmin-related myopathy (DRM or Desminopathy) is a subgroup of the myofibrillar myopathy diseases and is the result of a mutation in the gene that codes for desmin which prevents it from forming protein filaments, instead forming aggregates of desmin and other proteins throughout the cell. Recently, mutations were identified in patients suffered by an arrhythmogenic right ventricular cardiomyopathy (ARVC).

Product:

Rabbit IgG, 1mg/ml in PBS with 0.02% sodium azide, 50% glycerol, pH7.2

Molecular Weight:

53 kDa

Swiss-Prot:

P17661

Purification&Purity:

Peptide affinity purified

Applications:

WB:1:1,000-1:2,000

ICC:1:200

IHC:1:200

Storage&Stability:

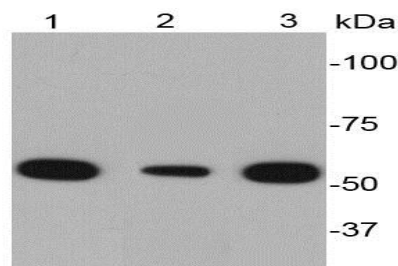
Store at +4 °C after thawing. Aliquot store at -20 °C or

-80 °C. Avoid repeated freeze / thaw cycles.

Specificity:

Desmin polyclonal antibody detects endogenous levels of Desmin protein.

DATA:

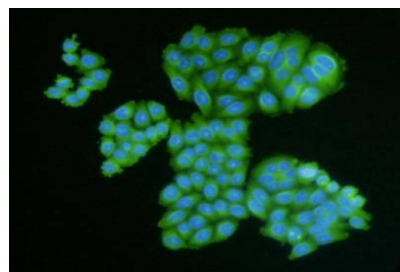


Western blot analysis of Desmin on different cell lysates using anti-Desmin antibody at 1/2000 dilution. Positive control:

Lane 1: Human skeletal muscle tissue

Lane 2: Mouse heart tissue

Lane 3: Human heart tissue



ICC staining of Desmin in HepG2 cells (green). Cells were fixed in paraformaldehyde, permeabilised with 0.25% Triton X100/PBS.

Note:

For research use only, not for use in diagnostic procedure.

Bioworld Technology, Inc.

Add: 1660 South Highway 100, Suite 500 St. Louis Park, MN 55416, USA.

Email: info@bioworld.com

Tel: 6123263284

Fax: 6122933841

Bioworld technology, co. Ltd.

Add: No 9, weidi road Qixia District Nanjing, 210046, P. R. China.

Email: info@biogot.com

Tel: 0086-025-68037686

Fax: 0086-025-68035151