

## Cytokeratin 2e polyclonal antibody

Catalog: BS90380

Host: Rabbit

Reactivity: Human

### BackGround:

The keratin multigene family is made of "soft" epithelial cytokeratins and "hard" hair keratins. While the epithelial cytokeratins are involved in the layering and formation of epithelia, the hair keratins are responsible for creating nails and hair. There are two types of keratins: the acidic class I keratin proteins and the basic/neutral class II keratin proteins. Keratin 2 (KRT2), also known as Keratin type II cytoskeletal 2 epidermal, Keratin-2e (K2e), KRTE, Cytokeratin-2e (CK-2e), KRT2A or KRT2E, is a 639 amino acid class II epithelial Keratin protein belonging to the intermediate filament family. Encoded by a gene that maps to human chromosome 12q13.13, Keratin 2 functions in epidermal keratinocyte activation and proliferation, and plays a part in terminal cornification. Highly expressed in upper epithelial tissues, Keratin 2 forms heterotetramers with two class I Keratins and another class II Keratin. Defects in Keratin 2 have been linked to ichthyosis bullosa of Siemens (IBS), a rare autosomal dominant skin disorder.

### Product:

Rabbit IgG, 1mg/ml in PBS with 0.02% sodium azide, 50% glycerol, pH7.2

### Molecular Weight:

65 kDa

### Swiss-Prot:

P35908(Human)

### Purification&Purity:

ProA affinity purified

### Applications:

WB:1:1,000

IHC:1:50-1:200

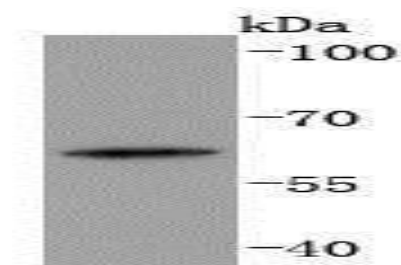
### Storage&Stability:

Store at +4 °C after thawing. Aliquot store at -20 °C or -80 °C. Avoid repeated freeze / thaw cycles.

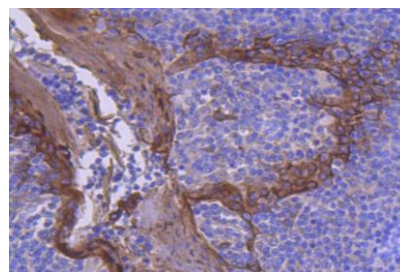
### Specificity:

Cytokeratin 2e polyclonal antibody detects endogenous levels of Cytokeratin 2e protein.

### DATA:



Western blot analysis of Cytokeratin 2e on human skin lysates using anti-Cytokeratin 2e antibody at 1/1,000 dilution.



Immunohistochemical analysis of paraffin-embedded human tonsil tissue using anti-Cytokeratin 2e antibody. Counter stained with hematoxylin.

### Note:

For research use only, not for use in diagnostic procedure.

### Bioworld Technology, Inc.

Add: 1660 South Highway 100, Suite 500 St. Louis Park, MN 55416, USA.

Email: [info@bioworld.com](mailto:info@bioworld.com)

Tel: 6123263284

Fax: 6122933841

### Bioworld technology, co. Ltd.

Add: No 9, weidi road Qixia District Nanjing, 210046, P. R. China.

Email: [info@biogot.com](mailto:info@biogot.com)

Tel: 0086-025-68037686

Fax: 0086-025-68035151