

## Ctip2 polyclonal antibody

Catalog: BS90342

Host: Rabbit

Reactivity: Mouse

### BackGround:

Bcl-11a (CtIP-1, EVI9, B cell chronic lymphocytic leukemia (CLL)/lymphoma 11A) and Bcl-11b (CtIP-2, RIT1, B cell CLL/lymphoma 11B) genes play crucial roles in lymphopoiesis and influence the progression of hematopoietic malignancies. Disruption of the Bcl-11b locus is linked to T cell acute lymphoblastic leukemia, and the loss of heterozygosity in mice results in T cell lymphoma. Bcl-11 proteins are related C2H2 zinc-finger transcription factors that act as transcriptional repressors. Bcl-11b can interact with the metastasis-associated proteins MTA1 and MTA2 through the amino-terminal region. Bcl-11a is essential for postnatal development and normal lymphopoiesis. The Bcl-11a mouse gene is a common site of retroviral integration in myeloid leukemia, and may function as a leukemia disease gene, in part, through its interaction with Bcl-6.

### Product:

Rabbit IgG, 1mg/ml in PBS with 0.02% sodium azide, 50% glycerol, pH7.2

### Molecular Weight:

~ 95 kDa

### Swiss-Prot:

Q9C0K0

### Purification&Purity:

The antibody was affinity-purified from rabbit antiserum by affinity-chromatography using epitope-specific immunogen and the purity is > 95% (by SDS-PAGE).

### Applications:

WB 1:500 - 1:2000

IHC 1:100 - 1:500

IF 1:100 - 1:500

ICC 1:100 - 1:500

ELISA 1:5000 - 1:10000

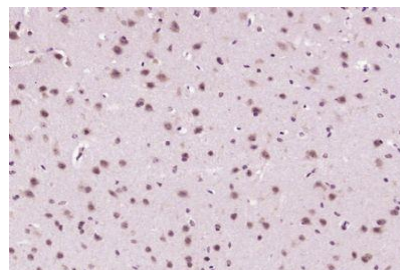
### Storage&Stability:

Store at 4 °C short term. Aliquot and store at -20 °C long term. Avoid freeze-thaw cycles.

### Specificity:

Ctip2 polyclonal antibody detects endogenous levels of Ctip2 protein.

### DATA:



Paraformaldehyde-fixed, paraffin embedded (Mouse brain); Antigen retrieval by boiling in sodium citrate buffer (pH6.0) for 15min; Block endogenous peroxidase by 3% hydrogen peroxide for 20 minutes; Blocking buffer (normal goat serum) at 37 °C for 30min; Antibody incubation with (Ctip2) Polyclonal Antibody, Unconjugated at 1:400 overnight at 4 °C.

### Note:

For research use only, not for use in diagnostic procedure.

### Bioworld Technology, Inc.

Add: 1660 South Highway 100, Suite 500 St. Louis Park, MN 55416, USA.

Email: [info@bioworld.com](mailto:info@bioworld.com)

Tel: 6123263284

Fax: 6122933841

### Bioworld technology, co. Ltd.

Add: No 9, weidi road Qixia District Nanjing, 210046, P. R. China.

Email: [info@biogot.com](mailto:info@biogot.com)

Tel: 0086-025-68037686

Fax: 0086-025-68035151