

CLTCL1 polyclonal antibody

Catalog: BS90311

Host: Rabbit

Reactivity: Human, Mouse, Rat

BackGround:

Clathrin is a major cytosolic coat protein in pits and vesicles originating from the plasma membrane and the trans-Golgi network. In receptor-mediated endocytosis, receptor proteins are engulfed by clathrin-coated vesicles. Clathrin is composed of three heavy chains and three light chains which associate non-covalently to form a triskelion structure. Clathrin heavy chain (HC) is composed of a terminal globular domain, a distal segment and a proximal segment containing a light chain binding site. The proximal segment of the Clathrin HC protein is essential for interactions between clathrin heavy chains and light chains which result in the formation of the triskelion structure.

Product:

Rabbit IgG, 1mg/ml in PBS with 0.02% sodium azide, 50% glycerol, pH7.2

Molecular Weight:

191/187 kDa

Swiss-Prot:

P53675(Human) Q68FD5(Mouse) P11442(Rat)

Purification&Purity:

ProA affinity purified

Applications:

WB:1:500-1:2,000

IHC:1:50-1:200

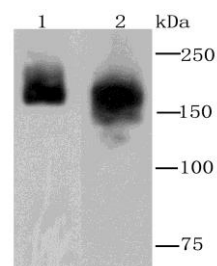
Storage&Stability:

Store at +4 °C after thawing. Aliquot store at -20 °C or -80 °C. Avoid repeated freeze / thaw cycles.

Specificity:

CLTCL1 polyclonal antibody detects endogenous levels of CLTCL1 protein.

DATA:



Western blot analysis of Clathrin heavy chain on Hela (1) and PC-12 (2) cell lysate using anti-Clathrin heavy chain antibody at 1/1,000 dilution.

Immunohistochemical analysis of paraffin-embedded human adrenal gland tissue using anti-Clathrin heavy chain antibody. Counter stained with hematoxylin.

Note:

For research use only, not for use in diagnostic procedure.

Bioworld Technology, Inc.

Add: 1660 South Highway 100, Suite 500 St. Louis Park, MN 55416, USA.

Email: info@bioworld.com

Tel: 6123263284

Fax: 6122933841

Bioworld technology, co. Ltd.

Add: No 9, weidi road Qixia District Nanjing, 210046, P. R. China.

Email: info@biogot.com

Tel: 0086-025-68037686

Fax: 0086-025-68035151