

## Cleaved PARP polyclonal antibody

Catalog: BS90309

Host: Rabbit

Reactivity: Human

### BackGround:

Poly(ADP-ribose) polymerase-1 (PARP-1), also designated PARP, is a nuclear DNA-binding zinc finger protein that influences DNA repair, DNA replication, modulation of chromatin structure, and apoptosis. In response to genotoxic stress, PARP-1 catalyzes the transfer of ADP-ribose units from NAD(+) to a number of acceptor molecules including chromatin. PARP-1 recognizes DNA strand interruptions and can complex with RNA and negatively regulate transcription. Actinomycin D- and etoposide-dependent induction of caspases mediates cleavage of PARP-1 into a p89 fragment that traverses into the cytoplasm. Apoptosis-inducing factor (AIF) translocation from the mitochondria to the nucleus is PARP-1-dependent and is necessary for PARP-1-dependent cell death. PARP-1 deficiencies lead to chromosomal instability due to higher frequencies of chromosome fusions and aneuploidy, suggesting that poly(ADP-ribosylation) contributes to the efficient maintenance of genome integrity. This antibody recognizes the apoptosis-specific 89 kDa catalytic domain fragment, but it does not recognize the full-length PARP-1 or the 24 kDa DNA binding domain fragment.

### Product:

Rabbit IgG, 1mg/ml in PBS with 0.02% sodium azide, 50% glycerol, pH7.2

### Molecular Weight:

89 kDa

### Swiss-Prot:

P09874(Human)

### Purification&Purity:

ProA affinity purified

### Applications:

WB:1:1,000-1:2,000

FC:1:50-1:100

ICC:1:50-1:200

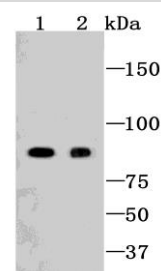
### Storage&Stability:

Store at +4 °C after thawing. Aliquot store at -20 °C or -80 °C. Avoid repeated freeze / thaw cycles.

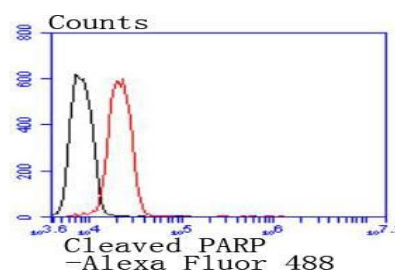
### Specificity:

Cleaved PARP polyclonal antibody detects endogenous levels of Cleaved PARP protein.

### DATA:



Western blot analysis of Cleaved PARP on different lysates using anti-Cleaved PARP antibody at 1/1,000 dilution. Positive control: Lane1: Jurkat Lane2: A549



Flow cytometric analysis of HeLa cells with Cleaved PARP antibody at 1/50 dilution (red) compared with an unlabelled control (cells without incubation with primary antibody; black). Alexa Fluor 488-conjugated goat anti rabbit IgG was used as the secondary antibody

### Note:

For research use only, not for use in diagnostic procedure.

### Bioworld Technology, Inc.

Add: 1660 South Highway 100, Suite 500 St. Louis Park, MN 55416, USA.

Email: [info@bioworld.com](mailto:info@bioworld.com)

Tel: 6123263284

Fax: 6122933841

### Bioworld technology, co. Ltd.

Add: No 9, weidi road Qixia District Nanjing, 210046, P. R. China.

Email: [info@biogot.com](mailto:info@biogot.com)

Tel: 0086-025-68037686

Fax: 0086-025-68035151



## PRODUCT DATA SHEET

Bioworld Technology, Inc.

---

---

### **Bioworld Technology, Inc.**

Add: 1660 South Highway 100, Suite 500 St. Louis Park,  
MN 55416, USA.

Email: [info@bioworld.com](mailto:info@bioworld.com)

Tel: 6123263284

Fax: 6122933841

### **Bioworld technology, co. Ltd.**

Add: No 9, weidi road Qixia District Nanjing, 210046,  
P. R. China.

Email: [info@biogot.com](mailto:info@biogot.com)

Tel: 0086-025-68037686

Fax: 0086-025-68035151