

Claudin 5 polyclonal antibody

Catalog: BS90308

Host: Rabbit

Reactivity: Human

BackGround:

The claudin superfamily consists of many structurally related proteins in humans. These proteins are important structural and functional components of tight junctions in paracellular transport. Claudins are located in both epithelial and endothelial cells in all tight junction-bearing tissues. Three classes of proteins are known to localize to tight junctions, including the claudins, Occludin and Junction adhesion molecule. Claudins, which consist of four transmembrane domains and two extracellular loops make up tight junction strands. Claudin expression is highly restricted to specific regions of different tissues and may have an important role in transcellular transport through tight junctions. Claudin-5 is expressed in the endothelial junctions of the rat liver and in junctions of acinar cells of the pancreas. Human Claudin-5 is abundantly expressed in adult lung, heart and skeletal muscle and is deleted in patients with velocardiofacial syndrome, which is characterized by cleft palate, facial dysmorphology and conotruncal heart defects.

Product:

Rabbit IgG, 1mg/ml in PBS with 0.02% sodium azide, 50% glycerol, pH7.2

Molecular Weight:

24 kDa

Swiss-Prot:

O00501(Human)

Purification&Purity:

ProA affinity purified

Applications:

WB:1:2,000-1:5,000

IHC:1:50-1:200

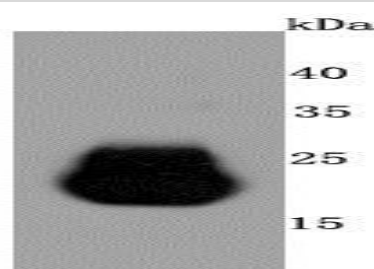
Storage&Stability:

Store at +4 °C after thawing. Aliquot store at -20 °C or -80 °C. Avoid repeated freeze / thaw cycles.

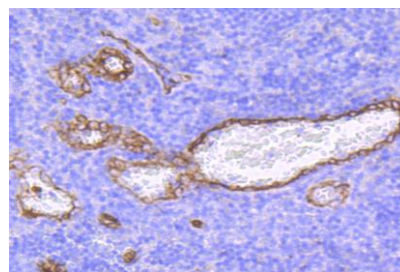
Specificity:

Claudin 5 polyclonal antibody detects endogenous levels of Claudin 5 protein.

DATA:



Western blot analysis of Claudin 5 on human lung cells lysates using anti-Claudin 5 antibody at 1/500 dilution.



Immunohistochemical analysis of paraffin-embedded human tonsil tissue using anti-Claudin 5 antibody. Counter stained with hematoxylin.

Note:

For research use only, not for use in diagnostic procedure.

Bioworld Technology, Inc.

Add: 1660 South Highway 100, Suite 500 St. Louis Park, MN 55416, USA.

Email: info@bioworld.com

Tel: 6123263284

Fax: 6122933841

Bioworld technology, co. Ltd.

Add: No 9, weidi road Qixia District Nanjing, 210046, P. R. China.

Email: info@biogot.com

Tel: 0086-025-68037686

Fax: 0086-025-68035151